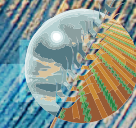
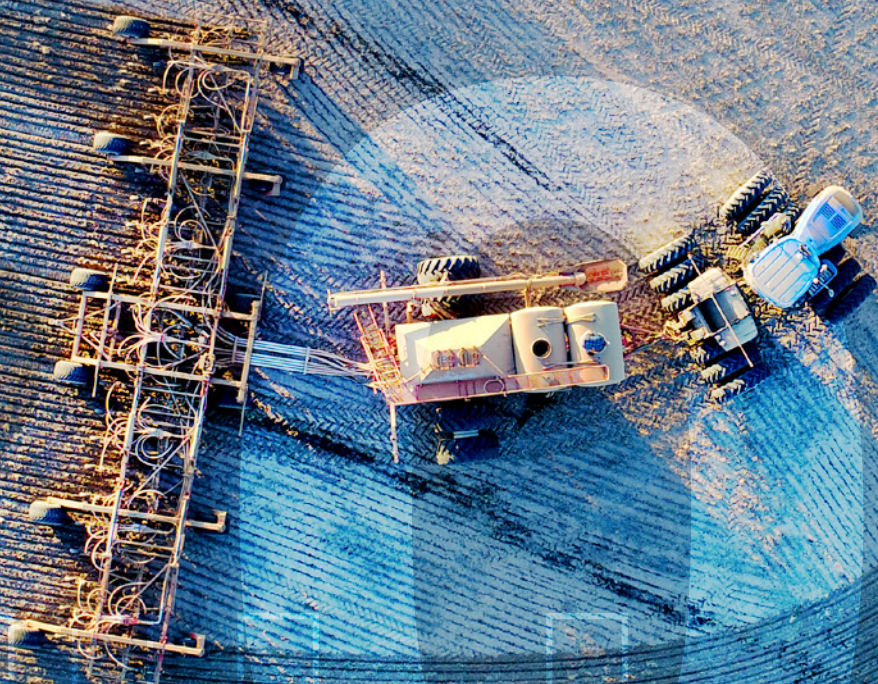
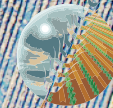


# TILLAGE

## 2021



# TILLAGE 2021



**PRIMARY**  
SALES AUSTRALIA

## WELCOME TO OUR 2021 TILLAGE GUIDE.

THE NEW LAYOUT WE HOPE WILL MAKE IT EASIER FOR YOU TO FIND THE PRODUCT YOU REQUIRE TO HELP YOU GET THE BEST OUTCOME FOR YOUR MACHINE AND YOUR CONDITIONS.

THERE ARE NEW PRODUCTS AVAILABLE FOR 2021

- > THE FLAT FACED POINTS FOR THE MORRIS QUANTUM WHICH HAVE BEEN DEVELOPED TO ENSURE YOUR NEW BAR COMPLIES WITHIN ITS SPECIFICATIONS FOR IT'S WARRANTY.
- > THE PHOENIX RANGE FOR THE HORSCH SPRINTER AND BOURGAULT PARALINK SEEDER BARS FOR ACCRETIVE SOILS.

OUR TEAM IS HERE TO HELP SO PLEASE CALL YOUR LOCAL PRIMARY SALES AUSTRALIA TECHNICAL SUPPORT PERSON SHOULD YOU NEED ADVICE FINDING THE RIGHT PRODUCT.

**OUR NUMBER IS ON THE BACK OR CALL 08-9462-1910**

### T&Cs

TERMS & CONDITIONS - Are available from our website.

PART RETURN POLICY - Within 14 days of invoice date - No penalty. 14 days plus of invoice date - A restocking fee may be charged depending on circumstances of 20%. After 90 days - Non-refundable.

PRICES - Are GST-exclusive recommended retail Primary Sales products which are effective 1st January, 2021 and are subject to change without notice. Product specifications may also change without notice as a result of our commitment to product development.

WARRANTY - Original purchasers of all new Primary Sales products enjoy the protection of the statutory provisions of the trade practices act. As the set-up and use of tillage, seeding and harvesting equipment is affected by variables beyond our control, neither the Manufacturer nor any person employed on its behalf - including dealers or agents - are liable for any loss or damage, whether consequential or otherwise, resulting from the use of its products. Warranty may/may not apply where any product is used for other than its intended and recommended purpose, or is subjected to pressures, loads or conditions beyond that for which it is designed. Should a product not perform its intended or recommended function, contact the supplying Dealer (your place of purchase).



# CONTOUR 2 / QUANTUM

**MORRIS**



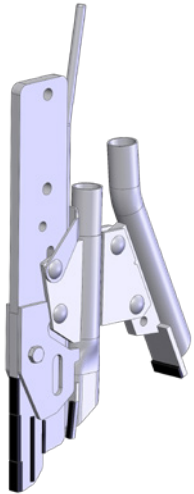
PRECISION

NON-WETTING SOIL

STICKY SOIL

SEEDING

## TINE LEG WITH IN-LINE DUAL SHOOT > FOR ACCRETIVE SOIL CONDITIONS



TINE LEG (TO SUIT REPLACEABLE POINT) INCL. 2 X B&N.  
MO-C2-TL .....\$143.00

WEAR ENHANCED, HEIGHT-ADJ  
REPLACEABLE POINT INCL. B&N  
MO-C2-PF .....\$95.00

DEEP BANDING, ADJ. FERTILISER  
TUBE FOR OPTIMUM SEPARATION  
INC 4X B&N  
PHX-DS-FT2 .....\$91.00

10MM LIQUID TUBE  
MO-C2-LIQ .....\$30.50

ADJ SEED TUBE WITH 40MM  
CLOSER  
MO-C2-STC-40 .....\$67.50

### OPTIONS



HEAVY DUTY 16MM WEAR  
ENHANCED, HEIGHT-ADJ.  
REPLACEABLE POINT INCL. B&N  
MO-C2-PF16.....\$122.50



# ADJ SEED TUBE WITH 25MM  
CLOSER  
MO-C2-STC-25 .....\$72.00



ADJ SIDE BANDING BOOT  
MO-C2-STSB .....\$100.00

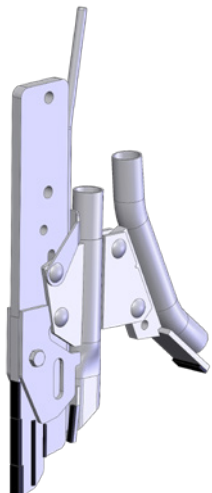


# ADJ SEED TUBE WITH(CURVE)  
40MM CLOSER  
MO-C2-STC-40C2 .....\$72.00



REVERSIBLE RESIDUE DEFLECTOR  
MO-C2-RD ..... \$39.00

## TINE LEG WITH IN-LINE DUAL SHOOT > FOR SANDED/LOAMY SOIL CONDITIONS



TINE LEG (TO SUIT REPLACEABLE POINT) INCL. 2 X B&N.  
MO-C2-TL .....\$143.00

WEAR ENHANCED, HEIGHT-ADJ  
REPLACEABLE POINT INCL. B&N  
MO-C2-PF .....\$95.00

DEEP BANDING, ADJ. FERTILISER  
TUBE (INC 4X B&N) FOR OPTIMUM  
SEPARATION  
PHX-DS-FT2 .....\$91.00

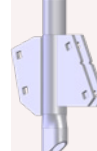
10MM LIQUID TUBE.  
MO-C2-LIQ .....\$30.50

ADJ SEED TUBE WITH(CURVE) 40MM  
CLOSER  
MO-C2-STC-40C2 .....\$72.00

### OPTIONS



HEAVY DUTY 16MM WEAR  
ENHANCED, HEIGHT-ADJ.  
REPLACEABLE POINT INCL. B&N  
MO-C2-PF16.....\$122.50



ADJ. FERTILISER TUBE (INC 4 X B&N)  
PHX-DS-FTN..... \$61.00



10MM LIQUID TUBE  
MO-C2-LIQ .....\$30.50



ADJ SEED TUBE WITH 25MM  
CLOSER  
MO-C2-STC-25..... \$72.00

ADJ SEED TUBE WITH 40MM  
CLOSER  
MO-C2-STC-40 .....\$67.50



ADJ SIDE BANDING BOOT  
MO-C2-STSB .....\$100.00



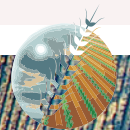
ADJ SEED TUBE (CURVE) WITH  
55MM CLOSER  
MO-C2-STC-55C2 ..... \$80.50



ADJ SEED TUBE 60MM Y-TAIL  
MO-C2-ST-YTAIL .....\$114.00



REVERSIBLE RESIDUE DEFLECTOR  
MO-C2-RD ..... \$39.00

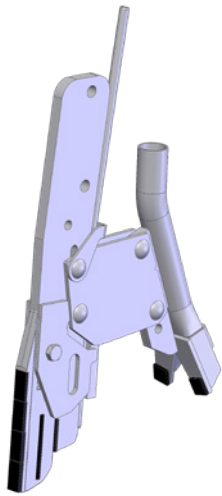


# CONTOUR 2 / QUANTUM

# MORRIS



## TINE LEG WITH IN-LINE SINGLE SHOOT



TINE LEG (TO SUIT REPLACEABLE POINT) INCL. 2 X B&N.  
MO-Q2-TL .....\$143.00

HEAVY DUTY 16MM WEAR ENHANCED, HEIGHT-ADJ. REPLACEABLE POINT INCL. B&N  
MO-C2-PF16.....\$122.50

SINGLE SHOOT BRACKET (INC 4 X B&N)  
MO-C2-SBB .....\$40.00

10MM LIQUID TUBE  
MO-Q-LIQ-T2 .....\$24.50

ADJ SEED TUBE 60MM Y-TAIL  
MO-C2-ST-YTAIL .....\$114.00

### OPTIONS



ADJ SEED TUBE WITH 25MM CLOSER  
MO-C2-STC-25 .....\$72.00



ADJ SEED TUBE WITH 40MM CLOSER  
MO-C2-STC-40 .....\$67.50



ADJ SEED TUBE WITH 40MM CLOSER  
MO-C2-STC-40C2 .....\$72.00

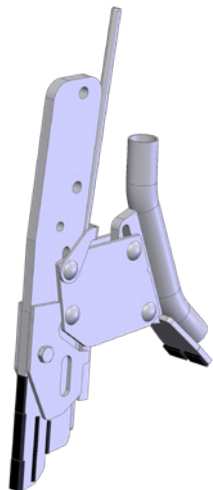


SIDE BANDING BOOT  
MO-C2-STSB .....\$100.00



REVERSIBLE RESIDUE DEFLECTOR  
MO-C2-RD .....\$39.00

## TINE LEG WITH IN-LINE SINGLE SHOOT



TINE LEG (TO SUIT REPLACEABLE POINT) INCL. 2 X B&N.  
MO-Q2-TL .....\$143.00

WEAR ENHANCED, HEIGHT-ADJ REPLACEABLE POINT INCL. B&N  
MO-C2-PF .....\$95.00

SINGLE SHOOT BRACKET (INC 4 X B&N)  
MO-C2-SBB .....\$40.00

10MM LIQUID TUBE.  
MO-Q-LIQ-T2 .....\$30.50

ADJ SEED TUBE WITH 55MM CLOSER  
MO-C2-STC-55C2 ..... \$80.50

### OPTIONS



ADJ SEED TUBE WITH 25MM CLOSER  
MO-C2-STC-25 .....\$72.00



ADJ SEED TUBE WITH 40MM CLOSER  
MO-C2-STC-40 .....\$67.50



ADJ SEED TUBE WITH 40MM CLOSER  
MO-C2-STC-40C2 .....\$72.00



SIDE BANDING BOOT  
MO-C2-STSB .....\$100.00



REVERSIBLE RESIDUE DEFLECTOR  
MO-C2-RD .....\$39.00

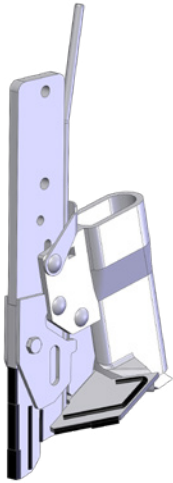
# CONTOUR 2 / QUANTUM

# MORRIS



PRECISION

TINE LEG WITH MORRIS PAIRED ROW & PSA WING DUAL SHOOT > FOR ACCRETIVE SOIL CONDITIONS



TINE LEG (TO SUIT REPLACEABLE POINT) INCL. 2 X B&N.  
MO-C2-TL .....\$143.00

WEAR ENHANCED, HEIGHT-ADJ  
REPLACEABLE POINT INCL. B&N  
MO-C2-PF ..... \$95.00

10MM LIQUID TUBE.  
MO-Q-LIQ-T2..... \$30.50

WEAR ENHANCED WING TO SUIT  
OEM MORRIS PAIRED ROW BOOT  
MO-C2-WING .....\$102.00

## OPTIONS



HEAVY DUTY 16MM WEAR  
ENHANCED, HEIGHT-ADJ.  
REPLACEABLE POINT INCL. B&N  
MO-C2-PF16.....\$122.50

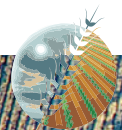


REVERSIBLE RESIDUE DEFLECTOR  
MO-C2-RD .....\$39.00

NON-WETTING SOIL

STICKY SOIL

SEEDING

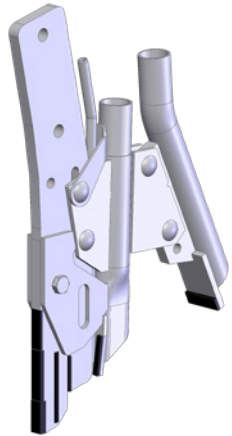


# CONTOUR DRILL 1

# MORRIS



## TINE LEG WITH IN-LINE DUAL SHOOT > FOR ACCRETIVE SOIL CONDITIONS



TINE LEG (TO SUIT REPLACEABLE POINT) INCL. 2 X B&N.  
MO-CD-CTL .....\$119.50

WEAR ENHANCED, HEIGHT-ADJ  
REPLACEABLE POINT INCL. B&N  
MO-C2-PF .....\$95.00

DEEP BANDING, ADJ. FERTILISER  
TUBE (INC 4X B&N) FOR OPTIMUM  
SEPARATION  
PHX-DS-FT2 .....\$91.00

10MM LIQUID TUBE.  
MO-CD-CTL-LT.....\$24.50

ADJ SEED TUBE WITH 40MM  
CLOSER  
MO-C2-STC-40.....\$67.50

### OPTIONS



HEAVY DUTY 16MM WEAR  
ENHANCED, HEIGHT-ADJ.  
REPLACEABLE POINT INCL. B&N  
MO-C2-PF16..... \$122.50



ADJ SEED TUBE WITH 25MM  
CLOSER  
MO-C2-STC-25..... \$72.00

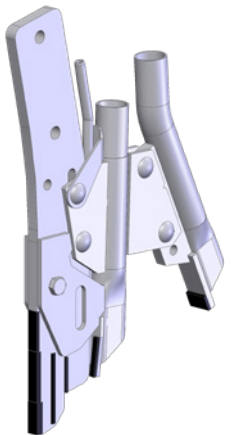


ADJ SIDE BANDING BOOT  
MO-C2-STSB .....\$100.00



REVERSIBLE RESIDUE DEFLECTOR  
MO-C2-RD .....\$39.00

## TINE LEG WITH IN-LINE DUAL SHOOT > FOR SANDED/LOAMY SOIL CONDITIONS



TINE LEG (TO SUIT REPLACEABLE POINT) INCL. 2 X B&N.  
MO-CD-CTL.....\$119.50

WEAR ENHANCED, HEIGHT-ADJ  
REPLACEABLE POINT INCL. B&N  
MO-C2-PF .....\$95.00

DEEP BANDING, ADJ. FERTILISER  
TUBE (INC 4X B&N) FOR OPTIMUM  
SEPARATION  
PHX-DS-FT2 .....\$91.00

10MM LIQUID TUBE.  
MO-CD-CTL-LT.....\$24.50

ADJ SEED TUBE WITH 25MM  
CLOSER  
MO-C2-STC-25 .....\$72.00

### OPTIONS



HEAVY DUTY 16MM WEAR  
ENHANCED, HEIGHT-ADJ.  
REPLACEABLE POINT INCL. B&N  
MO-C2-PF16..... \$122.50



ADJ. FERTILISER TUBE (INC 4 X B&N)  
MO-C2-DS-FTN .....\$61.00



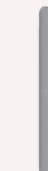
ADJ SEED TUBE WITH 40MM  
CLOSER  
MO-C2-STC-40 .....\$67.50



ADJ SIDE BANDING BOOT  
MO-C2-STSB..... \$100.00



SEED TUBE 60MM Y-TAIL  
MO-C2-ST-YTAIL ..... \$114.00



REVERSIBLE RESIDUE DEFLECTOR  
MO-C2-RD ..... \$39.00

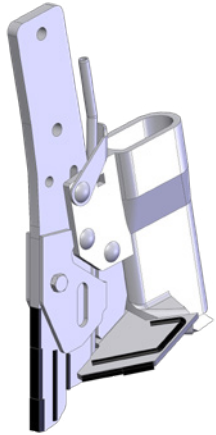
# CONTOUR DRILL 1

**MORRIS**



PRECISION

## TINE LEG WITH MORRIS PAIRED ROW & PSA WING DUAL SHOOT > FOR ALL SOIL CONDITIONS



TINE LEG (TO SUIT REPLACEABLE POINT) INCL. 2 X B&N.  
MO-CD-CTL.....\$119.00

WEAR ENHANCED, HEIGHT-ADJ. REPLACEABLE POINT INCL. B&N  
MO-C2-PF..... \$95.00

10MM LIQUID TUBE  
MO-CD-CTL-LT ..... \$24.50

WEAR ENHANCED WING TO SUIT OEM MORRIS PAIRED ROW BOOT  
MO-C2-WING .....\$102.00

### OPTIONS



HEAVY DUTY 16MM WEAR ENHANCED, HEIGHT-ADJ. REPLACEABLE POINT INCL. B&N  
MO-C2-PF16..... \$122.50

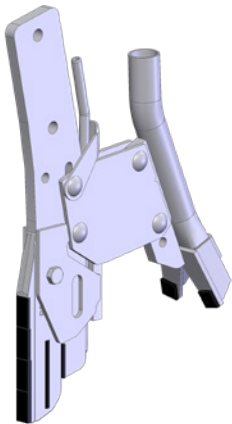


REVERSIBLE RESIDUE DEFLECTOR  
MO-C2-RD .....\$39.00

NON-WETTING SOIL

STICKY SOIL

## TINE LEG WITH IN-LINE SINGLE SHOOT OPTIONS



TINE LEG (TO SUIT REPLACEABLE POINT) INCL. 2 X B&N.  
MO-CD-CTL.....\$119.50

HEAVY DUTY 16MM WEAR ENHANCED, HEIGHT-ADJ. REPLACEABLE POINT INCL. B&N  
MO-C2-PF16.....\$122.50

SINGLE SHOOT BRACKET (INC 4 X B&N)  
MO-C2-SBB..... \$40.00

10MM LIQUID TUBE.  
MO-CD-CTL-LT..... \$24.50

SEED TUBE 60MM Y-TAIL  
MO-C2-ST-YTAIL ..... \$114.00

### OPTIONS



WEAR ENHANCED, HEIGHT-ADJ REPLACEABLE POINT INCL. B&N  
MO-C2-PF .....\$95.00



ADJ SEED TUBE WITH 25MM CLOSER  
MO-C2-STC-25 .....\$72.00



ADJ SEED TUBE WITH 40MM CLOSER  
MO-C2-STC-40 .....\$67.50

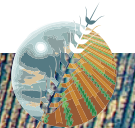


ADJ SIDE BANDING BOOT  
MO-C2-STSB .....\$100.00



REVERSIBLE RESIDUE DEFLECTOR  
MO-C2-RD .....\$39.00

SEEDING

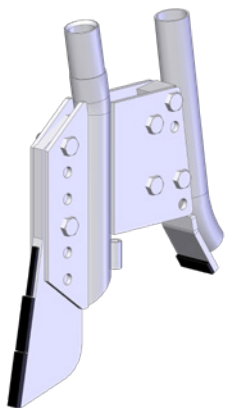


# BOURGAULT PARALINK

**BOURGAULT**


## TINE LEG WITH IN-LINE DUAL & SINGLE SHOOT > FOR SANDED/LOAMY SOIL CONDITIONS

### STANDARD



TINE ADAPTOR, INC: POINT  
HOLDER FERTILISER TUBE, SHANK  
MOUNT PLATE (INC 4 X B&N)  
BG-3310-TA .....\$101.50

WEAR ENHANCED, HEIGHT-ADJ  
REPLACEABLE POINT INCL. B&N  
BG-3310-P .....\$90.00

CURVED STEEL SEED TUBE  
BG-3310-STC-2 .....\$66.00

### OPTIONS



HEAVY DUTY 16MM WEAR  
ENHANCED, HEIGHT-ADJ.  
REPLACEABLE POINT INCL. B&N  
BG-3310-P16 .....\$122.50

WEAR ENHANCED, HEIGHT-ADJ.  
REPLACEABLE POINT WITH LIQUID  
TUBE. INCL. B&N  
BG-3310-P-LIQ.....\$111.50

HEAVY DUTY 16MM WEAR  
ENHANCED, HEIGHT-ADJ.  
REPLACEABLE POINT  
WITH LIQUID TUBE. INCL. B&N  
BG-3310-P16-LIQ.....\$140.50

STRAIGHT ADJ STEEL SEED TUBE  
BG-3310-ST .....\$67.00

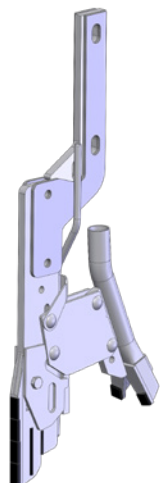
ADJ SIDE BANDING BOOT  
BG-3310-STSB .....\$106.50

ADJ SEED TUBE 60MM Y-TAIL  
BG-3310-YTAIL..... \$108.50

STEEL REDUCER TUBE REQUIRED  
WHEN USING 25MM I.D. HOSE.  
ST-RED-32-25.....\$9.50

## TINE LEG WITH IN-LINE SINGLE SHOOT

### PHOENIX



TINE LEG WITH IN-LINE SINGLE  
SHOOT BOURGAULT TINE ADAPTOR  
PHX-AB .....\$143.00

TINE LEG (TO SUIT REPLACEABLE  
POINT) INCL. 2 X B&N.  
MO-C2-TL .....\$143.00

HEAVY DUTY 16MM WEAR  
ENHANCED, HEIGHT-ADJ.  
REPLACEABLE POINT INCL. B&N  
MO-C2-PF16.....\$122.00

SINGLE SHOOT BRACKET  
(INC 4 X B&N)  
MO-C2-SSB.....\$40.00

10MM LIQUID TUBE.  
PHX-AB-LIQ..... \$25.00

ADJ SEED TUBE 60MM Y-TAIL  
PHX-ST-YTAIL..... \$114.00

### OPTIONS



WEAR ENHANCED, HEIGHT-ADJ  
REPLACEABLE POINT INCL. B&N  
MO-C2-PF .....\$95.00

ADJ SEED TUBE WITH 25MM  
CLOSER  
PHX-STC-25 .....\$72.00

ADJ SEED TUBE WITH 40MM  
CLOSER  
PHX-STC-40 ..... \$67.50

ADJ SEED TUBE WITH 40MM  
CLOSER  
PHX-STC-40C..... \$72.00

ADJ SIDE BANDING BOOT  
PHX-STSB .....\$100.00

REVERSIBLE RESIDUE DEFLECTOR  
MO-C2-RD ..... \$39.00



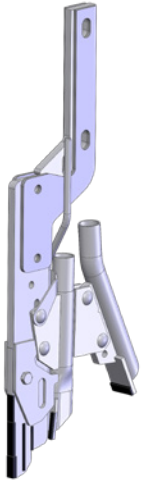
# BOURGAULT PARALINK



PRECISION

## TINE LEG WITH IN-LINE DUAL SHOOT > FOR ACCRETIVE SOIL CONDITIONS

### PHOENIX



#### BOURGAULT TINE ADAPTOR

PHX-AB .....\$143.00

TINE LEG (TO SUIT REPLACEABLE POINT) INCL. 2 X B&N.

MO-C2-TL .....\$143.00

WEAR ENHANCED, HEIGHT-ADJ REPLACEABLE POINT INCL. B&N

MO-C2-PF .....\$95.00

# DEEP BANDING, ADJ. FERTILISER TUBE (INC 4X B&N) FOR OPTIMUM SEPARATION

PHX-DS-FT2 .....\$91.00

10MM LIQUID TUBE.

PHX-AB-LIQ .....\$25.00

ADJ SEED TUBE WITH 40MM CLOSER

PHX-STC-40 .....\$67.50

### OPTIONS



WEAR ENHANCED, HEIGHT-ADJ REPLACEABLE POINT INCL. B&N  
MOC2-PF16 ..... \$122.50



ADJ SEED TUBE WITH 25MM CLOSER  
PHX-STC-25C.....\$72.00



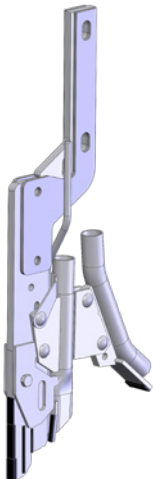
ADJ SEED TUBE WITH (CURVE) 40MM CLOSER  
PHX-STC-40C..... \$72.00



REVERSIBLE RESIDUE DEFLECTOR  
MO-C2-RD .....\$39.00

## TINE LEG WITH IN-LINE DUAL SHOOT > FOR SANDED/LOAMY SOIL CONDITIONS

### PHOENIX



#### BOURGAULT TINE ADAPTOR

PHX-AB ..... \$143.00

TINE LEG (TO SUIT REPLACEABLE POINT) INCL. 2 X B&N.

MO-C2-TL ..... \$143.00

WEAR ENHANCED, HEIGHT-ADJ REPLACEABLE POINT INCL. B&N

MO-C2-PF .....\$95.00

DEEP BANDING, ADJ. FERTILISER TUBE (INC 4X B&N) FOR OPTIMUM SEPARATION

PHX-DS-FT2 .....\$91.00

10MM LIQUID TUBE.

PHX-AB-LIQ .....\$25.00

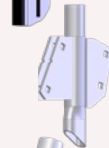
ADJ SEED TUBE WITH(CURVE) 40MM CLOSER

PHX-STC-40C .....\$72.00

### OPTIONS



HEAVY DUTY 16MM WEAR ENHANCED, HEIGHT-ADJ. REPLACEABLE POINT INCL. B&N  
MO-C2-PF16..... \$122.50



ADJ. FERTILISER TUBE (INC 4 X B&N)  
PHX-DS-FTN..... \$61.00



ADJ SEED TUBE WITH 25MM CLOSER  
PHX-STC-25 .....\$72.00



ADJ SEED TUBE WITH 40MM CLOSER  
PHX-STC-40 .....\$67.50



ADJ SIDE BANDING BOOT  
PHX-STSB .....\$100.00



ADJ SEED TUBE (CURVE) WITH 55MM CLOSER  
PHX-STC-55C .....\$80.50



ADJ SEED TUBE 60MM Y-TAIL  
PHX-ST-YTAIL .....\$114.00

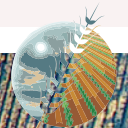


REVERSIBLE RESIDUE DEFLECTOR  
MO-C2-RD .....\$39.00

NON-WETTING SOIL

STICKY SOIL

SEEDING



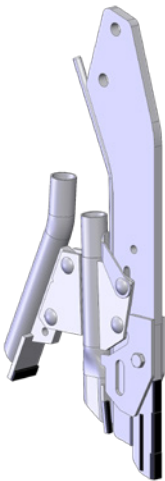
# HORSCH SPRINTER (2018 & ONWARDS)

# HORSCH



## TINE LEG WITH IN-LINE DUAL SHOOT > FOR ACCRETIVE SOIL CONDITIONS

### PHOENIX



TINE LEG (TO SUIT REPLACEABLE POINT) INCL. 2 X B&N.  
PHX-H18-TL .....\$166.00

WEAR ENHANCED, HEIGHT-ADJ  
REPLACEABLE POINT INCL. B&N  
MO-C2-PF .....\$95.00

# DEEP BANDING, ADJ. FERTILISER  
TUBE (INC 4X B&N) FOR OPTIMUM  
SEPARATION  
PHX-DS-FT2.....\$91.00

10MM LIQUID TUBE.  
PHX-H18-LIQ .....\$25.00

ADJ SEED TUBE WITH 40MM  
CLOSER  
PHX-STC-40 .....\$67.50

### OPTIONS



HEAVY DUTY 16MM WEAR  
ENHANCED, HEIGHT-ADJ.  
REPLACEABLE POINT INCL. B&N  
MO-C2-PF16.....\$122.50



ADJ SEED TUBE WITH 25MM  
CLOSER  
PHX-STC-25 .....\$72.00



ADJ SIDE BANDING BOOT  
PHX-STSB .....\$100.00



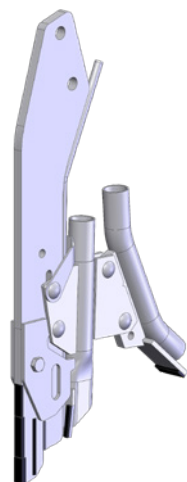
ADJ SEED TUBE WITH(CURVE) 40MM  
CLOSER  
PHX-STC-40C..... \$72.00



REVERSIBLE RESIDUE DEFLECTOR  
MO-C2-RD .....\$39.00

## TINE LEG WITH IN-LINE DUAL SHOOT > FOR SANDED/LOAMY SOIL CONDITIONS

### PHOENIX



TINE LEG (TO SUIT REPLACEABLE POINT) INCL. 2 X B&N.  
PHX-H18-TL .....\$166.00

WEAR ENHANCED, HEIGHT-ADJ  
REPLACEABLE POINT INCL. B&N  
MO-C2-PF .....\$95.00

DEEP BANDING, ADJ. FERTILISER  
TUBE (INC 4X B&N) FOR OPTIMUM  
SEPARATION  
PHX-DS-FT2 ..... \$91.00

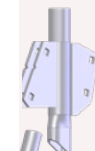
10MM LIQUID TUBE.  
PHX-H18-LIQ .....\$25.00

ADJ SEED TUBE WITH(CURVE) 40MM  
CLOSER  
PHX-STC-40C.....\$72.00

### OPTIONS



HEAVY DUTY 16MM WEAR  
ENHANCED, HEIGHT-ADJ.  
REPLACEABLE POINT INCL. B&N  
MO-C2-PF16 .....\$122.50



ADJ. FERTILISER TUBE (INC 4 X B&N)  
PHX-DS-FT ..... \$61.00



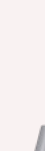
TUBE WITH 25MM CLOSER  
PHX-STC-25 ..... \$72.00



ADJ SEED TUBE WITH 40MM  
CLOSER  
PHX-STC-40 ..... \$67.50



ADJ SIDE BANDING BOOT  
PHX-STSB .....\$100.00



ADJ SEED TUBE (CURVE) WITH  
55MM CLOSER  
PHX-STSB-55C .....\$80.50



ADJ SEED TUBE 60MM Y-TAIL  
PHX-ST-YTAIL .....\$114.00



REVERSIBLE RESIDUE DEFLECTOR  
MO-C2-RD .....\$39.00

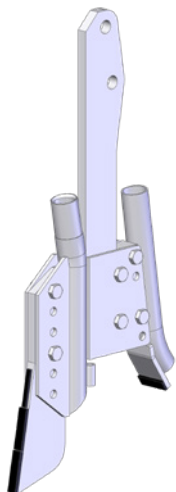
# HORSCH SPRINTER (2018 & ONWARDS) **HORSCH**



PRECISION

## TINE LEG WITH IN-LINE DUAL & SINGLE SHOOT > FOR SANDED/LOAMY SOIL CONDITIONS

### STANDARD



- TINE LEG (TO SUIT REPLACEABLE POINT) INCL. 2 X B&N.  
HOR-S18-TL .....\$166.00
- TINE ADAPTOR, INC: POINT HOLDER FERTILISER TUBE, SHANK MOUNT PLATE (INC 4 X B&N)  
BG-3310-TA .....\$101.50
- WEAR ENHANCED, HEIGHT-ADJ REPLACEABLE POINT INCL. B&N  
BG-3310-P .....\$90.00
- CURVED STEEL SEED TUBE  
BG-3310-STC-2 .....\$66.00

### OPTIONS



HEAVY DUTY 16MM WEAR ENHANCED, HEIGHT-ADJ. REPLACEABLE POINT INCL. B&N  
BG-3310-P16 .....\$122.50



WEAR ENHANCED, HEIGHT-ADJ. REPLACEABLE POINT WITH LIQUID TUBE. INCL. B&N  
BG-3310-P-LIQ.....\$111.50



HEAVY DUTY 16MM WEAR ENHANCED, HEIGHT-ADJ. REPLACEABLE POINT WITH LIQUID TUBE. INCL. B&N  
BG-3310-P16-LIQ.....\$140.50



STRAIGHT ADJ STEEL SEED TUBE  
BG-3310-ST .....\$67.00

ADJ SIDE BANDING BOOT  
BG-3310-STSB .....\$106.50

ADJ SEED TUBE 60MM Y-TAIL  
BG-3310-YTAIL..... \$108.50

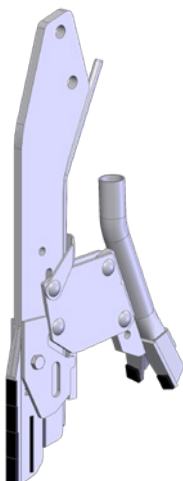
STEEL REDUCER TUBE REQUIRED WHEN USING 25MM I.D. HOSE.  
ST-RED-32-25.....\$9.50

NON-WETTING SOIL

STICKY SOIL

## TINE LEG WITH IN-LINE SINGLE SHOOT

### PHOENIX



- TINE LEG (TO SUIT REPLACEABLE POINT) INCL. 2 X B&N.  
PHX-H18-TL .....\$166.00
- HEAVY DUTY 16MM WEAR ENHANCED, HEIGHT-ADJ. REPLACEABLE POINT INCL. B&N  
MO-C2-PF16.....\$122.50
- SINGLE SHOOT BRACKET (INC 4 X B&N)  
MO-C2-SBB .....\$40.00
- 10MM LIQUID TUBE  
PHX-H18-LIQ .....\$25.00
- ADJ SEED TUBE 60MM Y-TAIL  
PHX-ST-YTAIL .....\$114.00

### OPTIONS



WEAR ENHANCED, HEIGHT-ADJ REPLACEABLE POINT INCL. B&N  
MO-C2-PF..... \$95.00



ADJ SEED TUBE WITH 25MM CLOSER  
PHX-STC-25 .....\$72.00



ADJ SEED TUBE WITH 40MM CLOSER  
PHX-STC-40 .....\$67.50



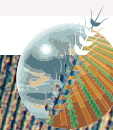
ADJ SEED TUBE WITH 40MM CLOSER  
PHX-STC-40C.....\$72.00



ADJ SIDE BANDING BOOT  
PHX-STSB .....\$100.00

REVERSIBLE RESIDUE DEFLECTOR  
MO-C2-RD .....\$39.00

SEEDING



# PRECISION SEEDER BAR

MADE RUGGED FOR DURABILITY & PRODUCTIVITY

## PRODUCTIVITY

With increasing need for dry seeding the priority for many Australian farmers is getting the seed into the ground for effective soil-to-seed contact and to take advantage of any available moisture at depth whilst completing their seeding program in time to benefit from rain when it arrives.

## DESIGNED FOR DURABILITY

Deep solid frame structure provides the rigid strength required to cope with tough Australian farming conditions.

## CONTROL

To achieve flourishing crop emergence and yield potential having better control over consistency in seed depth, fertiliser separation and the soil-to-seed contact to suit your specific paddock conditions is essential.

## TRASH FLOW

Superior through frame trash flow through deep rank frame design (6 centre and 5 on wing frames)





**LEADING  
GROUND  
ENGAGING  
OPTIONS**  
SEE PAGE 14



## SEEDING INTO HIGH STUBBLE

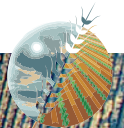
Depth of frame allows high flow of trash through the bar. Combined with contour following tine module able to deliver 1000lbs breakout at the point, this gives you control to maintain effective delivery of seed in compact to rocky soil conditions.



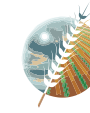
Floatation tyres for better weight distribution & control

## DEPTH & PLACEMENT

Control over seed and fertiliser separation and placement to your conditions, easy seed boot adjustment in 7.5mm increments and control to dig deep or shallow; easy control of working depth of the tine from 5mm to 300mm.



# PRECISION TINE ASSEMBLY



**PRIMARY**  
SALES AUSTRALIA



- > HYDRAULICALLY ADJUSTABLE TINE TRIP DELIVERS UP TO 1000LB FORCE AT THE POINT
- > POPPET VALVE IN TINE CYLINDER TO DAMPEN RETURN
- > ASSEMBLY CAN BE PINNED UP FOR DOUBLE ROW SPACING

PRESS WHEEL TYRE, 140MM WIDE "V" WIDE PRESSWHEEL TO MAXIMISE FLOTATION AND WATER HARVESTING

- > Rugged tapered roller bearings, double seal design with mud shield and dust cap
- > Spring-loaded hinging joint to avoid damage on breakout

P-PW-TYWV-2965  
\$157.00  
PRESS WHEEL RIM HALF, GALVANISED STEEL  
P-PW-RH-2873  
\$29.00

ROLLER BOX U-PLATE BOLT ON REPLACEMENT  
P-T-RBUP-B2 \$32.00

ROLLER ASSEMBLY COMPLETE FOR ROLLER BOX ASSEMBLY  
P-T-FTRAC-3275 \$55.00

SHORT RE-OPENER TO SUIT BOLT-ON WEAR PLATE HEAT-TREATED SPRING STEEL TINE, 16MM WIDE. TINE DEPTH ADJUSTABLE IN INCREMENTS OF 7.5MM  
P-ST-3087-SH \$29.00

SEED TUBE FOR 3087 RE-OPENER  
P-ST-3087-04N \$30.00  
WEAR PLATES FOR 3087 RE-OPENER  
TUNGSTEN TIPPED C/W BOLTS 25MM WIDE  
P-ST-3087-WP25 \$27.00  
25MM HD WITH EXTRA TUNGSTEN  
P-ST-3087-WP25E \$52.00  
40MM WIDE  
P-ST-3087-WP40 \$30.50

FERTILISER TUBE, GALVANISED (HOSE HOLDER INCLUDED)  
P-FT-3107-2 \$185.00

COMPLETE TINE RAM ASSEMBLY  
P-R-TINE-P-ASS \$420.00

PRECISION

OPTIONAL LOWER TINE QUICK ADJUSTER  
GET THE BEST WEAR FROM YOUR POINTS WITH THIS CLEVER INNOVATION!  
P T-LTQA INC PIN/CLIP \$110.50

LIQUID FERTILISER TUBE 10MM STAINLESS STEEL (OTHER SIZES AVAILABLE TO ORDER)  
FOR PPS KNIFE POINT  
P-FT-3325-LHDK \$58.00  
FOR PPS WINGED POINT  
P-FT-3327-LIQW \$35.00

CAST POINTS, HEAT TREATED WITH TUNGSTEN CARBIDE TIPS (FIXED TO TINE LOWER LEG WITH FLUSH-FITTING ROLL PINS)  
KNIFE POINT, 200 MM T/C  
P-P-K-200-3325 \$120.00  
KNIFE POINT, 150 MM T/C  
P-P-K-150-3325 \$115.00  
WINGED POINT, 190 MM T/C  
P-P-W-190-3327 \$198.50  
WINGED POINT, 150 MM T/C  
P-P-W-150-3327 \$175.00  
ROLL PIN, 1" X 3/8"  
(TWO REQ'D PER POINT)  
P-P-RP-3325 \$1.50

FERTILISER INJECTOR TUBE WITH TC WEAR PROTECTION (UNSUITABLE FOR HARSH CONDITIONS)  
P-FT-3003-SQ \$95.50

## OTHER BOOT OPTIONS

MOUNT BAR FOR Y-TAIL BOOT  
(2 X BRACKET REQUIRED)  
P-ST-3087-ST-V4 \$24.50  
38MM OD HOSE, FOR 65MM Y-TAIL  
P-ST-YTAIL \$106.00

MOUNT BAR FOR CURVED BOOT  
(2 X BRACKET REQUIRED)  
P-ST-3087-ST-V4 \$24.50  
38MM OD HOSE FOR 25MM WIDE CURVED TAIL  
P-ST-TAIL-C25 \$90.00

MOUNT BAR FOR ANGLE-ADJ. FLEXI-BOOT  
P-ST-3087-ST-V4 \$24.50  
MOUNT BRACKET FOR RUBBER FLEXI-BOOT  
P-ST-AAAMOUNT \$36.00  
38MM BARE ADJ. RUBBER BOOT TO SUIT  
P-ST-AALRB \$40.00  
38MM NARROW TAIL (25MM WIDE)  
P-ST-LRBTL-25 \$18.00

FERTILISER PROFILED THROUGH THE TILLAGE ZONE WITH OPTIONAL POLYURETHANE FERTILISER BOOT.  
INC. STAINLESS T-BOLT CLAMP  
P-FT-PFC-3001 \$30.00

# PRIMARY COULTER ASSEMBLIES



**PRIMARY**  
SALES AUSTRALIA

PRECISION

## EXCELS IN HEAVY STUBBLES & VINE-TYPE WEEDS

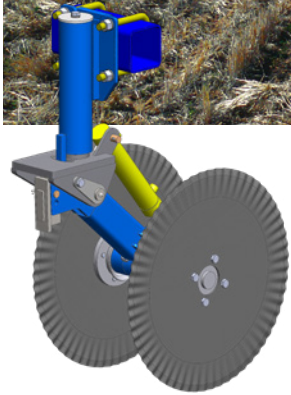
The right-hand side of this paddock clearly illustrates the benefits of using our coulters when sowing into heavy stubbles



- > Heavy-duty castoring coulters designed for a wide range of 100mm-frame cultivators, chisel plows and toolbars, featuring: adjustable depth (5 increments) & pressure settings
- > Can be pinned-up when not required or easily removed
- > Fitted with 500mm Ø x 60 ripple disc
- > Long service life & low-maintenance design
- > Includes all mounting gear
- > Suitable for bars with adequate lifting capacity only



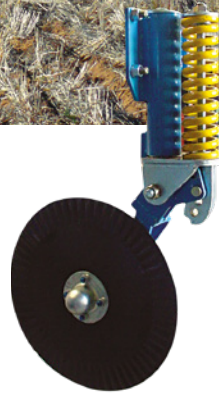
**ORDER SOON FOR DELIVERY 2021**



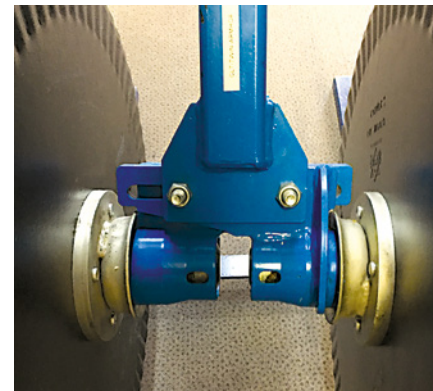
**TWIN ADJUSTABLE WIDTH, HYDRAULIC DEPTH CONTROL**  
CLT-TBM-HYD-A



**HEAVY DUTY TWIN DISC ASSEMBLY TWIN H/D ADJUSTABLE**  
CLT-TBM-60-HDA



**SINGLE DISC ASSEMBLY SINGLE BAR MOUNT**  
CLT-SBM-60



**HEAVY DUTY ADJUSTABLE VERSION, SHOWING TAPERED ROLLER BEARING ASSEMBLIES**

**ROW SPACING: 160MM TO 234MM OR 226MM TO 330MM @ APPROX. 10MM INCREMENTS. FIXED SPACING OPTIONS TO 400MM**

CLT-TBM-HYD-A	Twin Hydraulic Coulters HD Adjustable	\$2,239.00
CLT-TBM-HYD-N	Twin Hydraulic Coulters Fixed 260mm	\$1,997.00
CLT-TBM-HYD-W	Twin Hydraulic Coulters Fixed 300mm	\$1,997.00
CLT-SBM-HYD	Single Hydraulic Coulters	\$2,176.00
CLT-SBM-60	Single Bar Mounted Coulters	\$1,183.00
CLT-TBM-60-HDA	Heavy Duty Twin Adjustable Coulters	\$1,729.00
CLT-TBM-60-HD260	Heavy Duty Twin Fix 260mm Coulters	\$1,458.00
CLT-TBM-60-HD300	Heavy Duty Twin Fix 300mm Coulters	\$1,462.00
CLT-TBM-60	Twin Bar Mounted Coulters 226mm-330mm	\$1,418.00

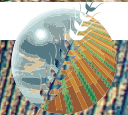


NON-WETTING SOIL

STICKY SOIL

WEEDING

STUBBLE



# CULTIVATORS TINES WITH 2 X 7/16" BOLT HOLES@45MM CENTRES



SEED BOOT OPTIONS SEE PAGE 21

POINTS ARE TUNGSTEN CARBIDE TIPPED FOR EXTRA WEAR LIFE AND EXCELLENT PENETRATION

FIND YOUR MACHINE HERE

MACHINE	POINTS SELECTION	SINGLE SHOOT BRACKETS	DUAL SHOOT FERTILISER BRACKETS	SEED BOOTS
CASE PTX 600 350LB, FLEXICOIL 265/350LB. C SHANK SHEARER 800 (PRE-2002) <sup>1</sup>	SEE BELOW	ST-SBB-1	32MM O/D HOSE ST-DPB-F1 OR 38MM O/D HOSE ST-DPB-LF1	ALL
GASON 5100 <sup>2</sup> GYRAL AGBOSS 400LB. <sup>2</sup> AFM 340LB. <sup>2</sup>	SEE BELOW	ST-SBB-4 ST-SBB-FM-1 ST-SBA-FM-1	ST-DPB-F4 (32MM) -LF4 (38MM) ST-DPB-F7 (32MM), ST-DPB-LF7 (38MM)	ALL ALL

<sup>1</sup> REQUIRES SINGLE SHOOT BRACKET ST-SBB-JS800 OR DOUBLE SHOOT BOOT ST-DPB-F5/LF5  
<sup>2</sup> REQUIRES PSP- 3, 3MM SPACER BEHIND TOP HOLE WITH PR 96, 97

BOLTS & NUTS FOR NARROW POINTS: TWO 2 3/4" X 1/2" G8 BOLTS & NYLOCS (INCLUDES EXTRA LENGTH FOR FITTING BOOTS) TORQUE SETTING 82 NM, 60 LBFT



SUPER SEEDER (60MM WING) TUNGSTEN CARBIDE ON LEADING EDGE AND UNDERSIDE OF WING  
 PR-96-DB-TW \$83.50



SUPER SEEDER (60MM WING) ANGLED TUNGSTEN CARBIDE ON LEADING EDGE AND WINGS  
 PR-96-DB-ATW \$94.00



12MM HEAVY DUTY KNIFE TUNGSTEN CARBIDE ON LEADING EDGE  
 PR-97 \$88.50

## DOUBLE SHOOT BOOTS

Use the cross-bolt to position the fertiliser delivery tube for deep or shallow placement. These fertiliser boots are also popular for single shoot seeding behind shallow working points, but only when sowing at depth of working.



7/16" BOLT HOLES@45MM CENTRES  
 32MM O/D HOSE ST-DPB-F4 \$65.50  
 38MM O/D HOSE ST-DPB-LF4 \$66.50



7/16" BOLT HOLES @ 45MM CENTRES 32MM O/D HOSE ST-DPB-F1 \$68.50  
 38MM O/D HOSE ST-DPB-LF1 \$67.00

## SINGLE SHOOT BRACKETS



ST-SBB-1 \$43.50



ST-SBB-4 \$43.50

## ULTRA TINE SYSTEM

UPGRADE YOUR EXISTING CULTIVATOR OR CHISEL PLOW TO AN ULTRA-LOW DISTURBANCE MACHINE WITH THESE COST EFFICIENT, EASY-TO-FIT REPLACEMENT TINES

- > Choice of "T" wing or Narrow knife point with tungsten carbide on leading edges
- > Super slim design for ultra-low soil disturbance and superior stubble flow
- > Various Shank, point and boot designs available to order

MADE TO ORDER PLEASE ORDER EARLY





# CULTIVATORS

TINES WITH 2 X 1/2" BOLT HOLES @ 45MM CENTRES



POINTS ARE TUNGSTEN CARBIDE TIPPED FOR EXTRA WEAR LIFE AND EXCELLENT PENETRATION

FIND YOUR MACHINE HERE

MACHINE	POINTS SELECTION	SINGLE SHOOT BRACKETS	DUAL SHOOT FERTILISER BRACKETS	SEED BOOTS
CASE PTX 600, SHEARER 630, 800 (POST 2002) MORRIS* 9000 & 2000 (400, 550LB. TINE) FLEXICOIL 350LB. EDGE-ON	SEE BELOW	ST-SBB-2-5	ST-DPB-F2-5 (32MM O/D HOSE) OR ST-DPB-LF2-5 (38MM O/D HOSE)	ALL
BOURGAULT, EZEE-ON, GYRAL AGBOSS HB SCARIBAR, GASON VERT. SHANK, SMALE SIMPLICITY, PSA SCARI. CONVERSIONS	SEE BELOW	ST-SBB-4	ST-DPB-F4 (32MM OD/HOSE) OR ST-DPB-LF4 (38MM OD/HOSE)	ALL

\*MORRIS CONTOUR DRILLS: A COMPLETE RANGE OF POINT AND BOOT OPTIONS FOR THESE MACHINE IS AVAILABLE. REFER PAGE 6 AND 7 FOR MORE INFORMATION.

**BOLTS & NUTS FOR NARROW POINTS: TWO 2 3/4" X 1/2" G8 BOLTS & NYLOCS (INCLUDES EXTRA LENGTH FOR FITTING BOOTS) TORQUE SETTING 82 NM, 60 LBFT**



**SUPER SEEDER (60MM WING) TUNGSTEN CARBIDE ON LEADING EDGE AND UNDERSIDE OF WING**  
PR-86DB-TW \$98.00



**SUPER SEEDER (60MM WING) ANGLED TUNGSTEN CARBIDE ON LEADING EDGE AND WINGS**  
PR-86-DB-ATW \$101.00



**16MM HEAVY DUTY KNIFE TUNGSTEN CARBIDE ON LEADING EDGE**  
PR-87 \$93.50

**DOUBLE SHOOT BOOTS**  
Use the cross-bolt to position the fertiliser delivery tube for deep or shallow placement. These fertiliser boots are also popular for single shoot seeding behind shallow working points, but only when sowing at depth of working.

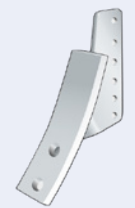


**32MM O/D HOSE ST-DPB-F2-5 \$65.50**  
**38MM O/D HOSE 1/2" BOLT HOLES @ 45-50MM CENTRES ST-DPB-LF2-5 \$66.50**



**32MM O/D HOSE 1/2" BOLT HOLES @ 45-57MM CENTRES ST-DPB-F4 \$65.50**  
**38MM O/D HOSE ST-DPB-LF4 \$63.00**

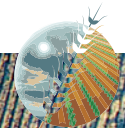
**SINGLE SHOOT BRACKETS**



ST-SBB-2-5 \$43.50



ST-SBB-4 \$43.50



DEEP-RIPPING

NON-WETTING SOIL

WEEDING

# CHISEL PLOWS

TINES WITH 2 X 1/2" BOLT HOLES @ 57MM CENTRES



**PRIMARY**  
SALES AUSTRALIA



**SEED BOOT OPTIONS**  
SEE PAGE 21

**POINTS ARE TUNGSTEN CARBIDE TIPPED FOR EXTRA WEAR LIFE AND EXCELLENT PENETRATION**

FIND YOUR MACHINE HERE

MACHINE

POINTS SELECTION

SINGLE SHOOT BRACKETS

DUAL SHOOT FERTILISER BRACKETS

SEED BOOTS

CASE PTX 600, CONCORD, JOHN DEERE, FRIGGSTAD, FLEXICOIL 550/650 MORRIS 750, SHEARER T/WORKER

SEE BELOW

ST-SBB-3

ST-DPB-F3 (32MM O/D HOSE) OR ST-DPB-LF3 (38MM O/D HOSE)  
Note: use ST-DPB-FTW for Shearer T/worker (57mm centres)

ALL

BOURGAULT EZEE-ON AFM SCARICHISEL

SEE BELOW

ST-SBB-4

ST-DPB-F4 (32MM) OR ST-DPB-LF4 (38MM)

ALL

**BOLTS & NUTS FOR NARROW POINTS: TWO 2 3/4" X 1/2" G8 BOLTS & NYLOCS (INCLUDES EXTRA LENGTH FOR FITTING BOOTS) TORQUE SETTING 82 NM, 60 LBFT**



**SUPER SEEDER (60MM WING) TUNGSTEN CARBIDE ON LEADING EDGE AND UNDERSIDE OF WING**  
PR-86-DB-TW \$98.00



**SUPER SEEDER (60MM WING) ANGLED TUNGSTEN CARBIDE ON LEADING EDGE AND WINGS**  
PR-86-DB-ATW \$101.00



**16MM HEAVY DUTY KNIFE TUNGSTEN CARBIDE ON LEADING EDGE**  
PR-87 \$93.50

## DOUBLE SHOOT BOOTS

Use the cross-bolt to position the fertiliser delivery tube for deep or shallow placement. These fertiliser boots are also popular for single shoot seeding behind shallow working points, but only when sowing at depth of working.



**32MM O/D HOSE ST-DPB-F3 \$66.50**  
**38MM O/D HOSE ST-DPB-LF3 \$66.50**  
1/2" BOLT HOLES @ 57MM CENTRES



**32MM O/D HOSE ST-DPB-F4 \$65.50**  
**38MM O/D HOSE ST-DPB-LF4 \$66.50**  
1/2" BOLT HOLES @ 45-57MM CENTRES



**PR-18-T 2 1/2" RIPPER T.C. TIPPED \$58.00**

Dividing ridge avoids bringing "sour" soil to the surface

## SINGLE SHOOT BRACKETS



ST-SBB-4 \$43.50



ST-SBB-3 \$43.50

# SCARIFIERS TINES WITH 1/2" BOLT HOLE

PRIMARY  
SALES AUSTRALIA



SEED  
BOOT  
OPTIONS  
SEE PAGE 21



**8" LOW-PROFILE SWEEP  
T.C. TIPPED**  
PR-14-T ..... \$62.00



**7" SWEEP T.C. TIPPED**  
PR-13-T ..... \$54.00



**2 1/2" RIPPER T.C. TIPPED**  
PR-11-T ..... \$42.00



**SCARI SUPER  
SEEDER  
(50MM WING)  
TUNGSTEN  
CARBIDE ON  
LEADING EDGE  
AND UNDERSIDE  
OF WING**  
PR-84-DB-TW  
\$98.00



**REQUIRES ONE  
2 1/2" X 1/2" UNF G8  
BOLT & NYLOC  
PLUS ONE TINE  
CLIP > RIGHT >**

**SHEARER, MF, IH:** Includes:  
1 1/2" x 3/8" C/ H bolt & Nyloc nut,  
flat washer and 1 1/2" x 1/4" Hex  
bolt & Nyloc nut  
PAC-84-1 \$6.50

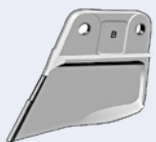
**CJD 300, FE 350:** Includes: 1 1/2"  
x 3/8" C/ H bolt & Nyloc nut, flat  
washer and 1 1/2" x 3/8" Hex bolt  
& Nyloc nut  
PAC-84-2 \$7.50

**CS SCARISEEDER:** Includes:  
M 10 x 40 Hex bolt & Nyloc nut,  
flat washer and 1 1/4" x 1/4" Hex  
bolt & Nyloc nut  
PAC-84-3 \$7.50

**H. B. S/ MASTER:** Includes:  
1 3/4" x 3/8" C/ H bolt & Nyloc nut,  
flat washer and 1 3/4" x 3/8" Hex  
bolt & Nyloc nut  
PAC-84-4 \$8.50

**BOLTS & NUTS FOR NARROW  
POINTS: TWO 2 3/4" X 1/2" G8  
BOLTS & NYLOCS (INCLUDES  
EXTRA LENGTH FOR FITTING  
BOOTS) TORQUE SETTING 82  
NM, 60 LBFT**

## PASTURE RENOVATION



**"BAKER" T-BOOT**  
PR-93 \$47.50  
Tungsten Carbide on  
leading edge (60mm bolt  
centres) Use two 1 1/2" x  
5/16" bolts for Connor  
Shea Coil Tine couler  
drill. Use two M10x30 bolts for Agrow  
Drill or Duncan Drill & two 1 3/4" x 5/16"  
for Aitchison (NZ) Drill  
**TUNGSTEN WING OPTION  
AVAILABLE AT EXTRA COST**



**MINI T-BOOT**  
PR-92-M  
\$31.00  
Tungsten Carbide on  
leading edge (32mm  
bolt centres) Use two 1"  
x 5/16" bolts for Begg,  
Shearer Tine Drill, Sod Seeder Coulter  
Tine Drill, Trash Culti-Drill, all other  
machines converted with "Caldow" tine  
adaptors. Note: 2003 Model adaptors  
may have 3/8" boltholes



**PR-94-TW**  
\$62.50 (SHOWN)  
Super Seeder 50mm wing  
with tungsten carbide leading  
edge and underside of wing.  
Agronomic benefits of an  
inverted-T seedbed with  
minimum disturbance and precise seed  
placement  
**OR PR-94 \$54.50**  
With tungsten carbide leading edge



**KNIFE POINT**  
PR-91 \$42.00  
Tungsten Carbide on  
leading edge 20mm-wide  
Lucerne type point for  
pasture renovation and  
minimised disturbance of  
the soil

## COIL TINE PARTS FOR "CONVERT-A-DRILL"



**DUAL  
SHOOT  
FERTILISER  
BOOT**  
PCT-FT-235  
\$50.50



**RESIDUE  
DEFLECTOR  
FOR USE  
WITH**  
PCT-FT-235  
PCT-TT-4  
\$32.50



**COIL TINE  
MUD SHIELD**  
PCT- MUD-1  
\$12.00



**SINGLE/  
DUAL  
SHOOT  
BRACKET**  
PCT-SBB-2  
\$21.00



**RESIDUE  
DEFLECTOR  
FOR USE  
WITH PCT-  
SBB-2**  
PCT-TT-3  
\$37.00



**75MM (INC.  
NYLOCS)  
(OR -UB4A,  
100MM)**  
PCT-UB3A  
FROM  
\$15.00

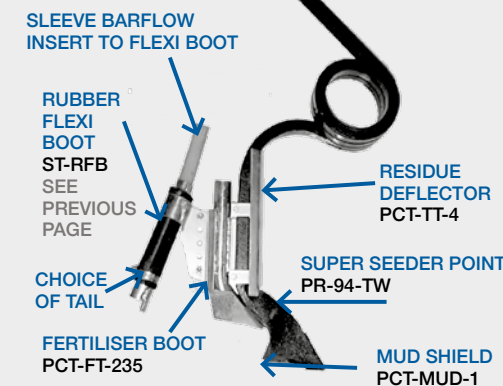


**102MM**  
PCT-L75A  
OR  
PCT-L-102A  
FROM  
\$30.00



**75MM**  
PCT-CP3A  
OR  
102MM  
PCT-CP4A  
FROM  
\$22.00

**DIAMOND (OR  
VERTICAL)  
MOUNT TINE**  
PCT-D-LH/RH  
BARE TINE \$212.50  
SHOWN WITH  
ADJUSTABLE  
SEED AND FIXED  
FERTILISER  
BOOTS, MUD  
SHIELD AND  
RESIDUE  
DEFLECTOR



DEEP-RIPPING

NON-WETTING SOIL

SEEDING

WEEDING

# CULTIVATORS & COMBINES

44° & 35°  
STEM  
ANGLE

PRIMARY  
SALES AUSTRALIA



SEED  
BOOT  
OPTIONS  
SEE PAGE 21



**BOLTS & NUTS: OR NARROW POINTS: ONE 2½" X 7/16" G8 BOLT & NYLOC (INCLUDES EXTRA LENGTH FOR FITTING BOOTS) TORQUE SETTING 70 NM, 52 LBFT**

DUAL-SHOOT  
EXAMPLE

FIND  
YOUR  
MACHINE  
HERE

MACHINE	POINTS SELECTION	SINGLE SHOOT BRACKETS	DUAL SHOOT FERTILISER BRACKETS	SEED BOOTS
44 :ALAN JOHNS <sup>1</sup> , GASON 4100/5100, GYRAL, INT. 751, MASSEY, RYAN <sup>1</sup> , JOHN SHEARER 580/620, ALFARM, HORWOOD BAGSHAW <sup>2</sup> 35:ACKLAND PARKES, ALFARM, H. BAGSHAW	SEE BELOW	ST-SBEO-4	ST-UNI-R35 WITH TINE CLIP (SEE BELOW)	ALL
44:FORWARD 270, JOHN DEERE 700/275 35: BLUELINE, DUNSTAN, 4 FMRS, GYRAL, N H	SEE BELOW	ST-SBEO-3	ST-FE-270-F (32MM OD HOSE)	ALL

<sup>1</sup>USE GRADE 10.9, M10 BOLTS WITH RYAN & ALAN JOHNS TINES

<sup>2</sup>SOME EARLY HORWOOD BAGSHAW SQUARE TINES REQUIRE TINE ADAPTOR PA-63



60MM WING & NOSE BLADE TO SUIT HIGHER BREAKOUT TINES  
TUNGSTEN CARBIDE ON NOSE & UNDERSIDE OF WING  
PR-94-DB-TW \$83.50



SUPER SEEDER WITH 50MM WING TUNGSTEN CARBIDE ON NOSE & UNDERSIDE OF WING  
PR-94-TW \$62.50



20MM KNIFE POINT TUNGSTEN CARBIDE TIPPED PR-91 \$42.00



SPEAR POINT, T.C. TIPPED PR-42 \$42.00  
Direct fit on Connellan, Gyrals, Gason, Horwood Bagshaw, fitted with spear point tines adaptors. Also fits Janke 4 with PA 42-1 adaptor



4" COMBINE POINT, T.C. TIPPED PR-3-T \$34.50



7" CULTIVATOR POINT, T.C. TIPPED PR-9-T \$47.00



2" CULTIVATOR TUNGSTEN CARBIDE TIPPED PR-23-T \$34.50



Adaptor to fit PR-42 Spear point to Janke tines PA-42-1 \$34.50



Seed depth plate for use with points PR9, PR94 SDP-1 \$29.50

5" COMBINE POINT, T.C. TIPPED PR-4-T \$36.00

FOR 35 TINES ORDER PR 21-T 7" CULTI. POINT, T.C. TIPPED \$45.00

1½" RIPPER T.C. TIPPED PR-7-T \$32.00



Mud shield (for dual banding boots) ST-MUD-R \$8.50



DUAL BANDING BOOT FOR MOST TINES REQUIRES TINE CLIP (TCB SERIES) & 1½" X 5/16" BOLT & NYLOC. ADVISE SHANK TYPE WHEN ORDERING ST-UNI-R35 \$57.00



SUITS JD 275,753, FORWARD 270, 853 AND MOST 35 DEGREE TINES REQUIRES SUITABLE ST-CB TINE CLIP AND 1" X 5/16" BOLT & NUT ST-SBEO-3 \$36.00



FERTILISER BOOT FOR DUAL BANDING ON JOHN DEERE 275,753 AND FORWARD 270, 853 ST-FE270-F \$64.50



SUITS MOST SINGLE BOLT TINES REQUIRES SUITABLE ST-CB TINE CLIP AND 1" X 5/16" BOLT & NUT ST-SBEO-4 \$34.00

DEEP-RIPPING  
NON-WETTING SOIL

WEEDING

# SEEDING BOOT SELECTION



## TO SUIT 32MM OD DELIVERY HOSE

SELECT BOOT



**STANDARD FLEXI BOOT**  
ST-RFB \$43.50

**LOW-MOUNT FLEXI BOOT**  
HOSE MOUNTS LOWER  
TO MATCH LONG POINTS  
AND AVOID BRACKET  
DAMAGE ON BREAKOUT  
ST-RFB-LM \$46.50

SELECT TAIL



**STRAIGHT TAIL (45MM LONG)**  
ST-RFBTAIL-45 \$18.00



**CURVED TAIL**  
ST-RFBTAIL-C \$19.50

**TOP SPIGOT OF FLEXIBOOT  
CAN BE SLEEVED TO SUIT  
SMALLER HOSE**

**WARRANTY** All rubber Flexiboots must have the delivery hose (or quality substitute nylon hose) fully inserted into boot for long life and accurate seed/fertiliser placement.

## TO SUIT 38MM OD DELIVERY HOSE

SELECT BOOT



**LARGE FLEXI BOOT**  
ST-L-RB \$44.50

**LARGE FLOW-MOUNT FLEXI BOOT**  
HOSE MOUNTS LOWER TO  
MATCH LONG POINTS AND  
AVOID BRACKET DAMAGE  
ON BREAKOUT  
ST-L-RB-LM \$51.50

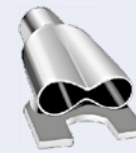
SELECT TAIL



**STRAIGHT TAIL  
(45MM LONG)**  
ST-L-RBTAIL-45  
\$22.50



**STRAIGHT TAIL  
(25MM WIDE  
TAIL)**  
AS USED  
ON OUR  
PRECISION  
SEEDER BARS  
P-ST-LRBTL-25  
\$18.00



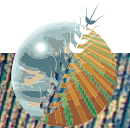
**TAIL  
(65MM WIDE)** Not designed for use behind  
narrow points or in rocky conditions  
**SPLITTER**  
ST-L-RBTAIL-Y  
\$33.00



**CURVED TAIL** ST-L-RBTAIL-C \$21.00

**USE 2 OF 1" X 5/16" BOLTS  
AND NYLOCS TO MOUNT**

**ALL RUBBER FLEXIBOOT  
ARE SUPPLIED WITH QUALITY  
STAINLESS HOSE CLAMPS**



# PRESSWHEEL ASSEMBLIES

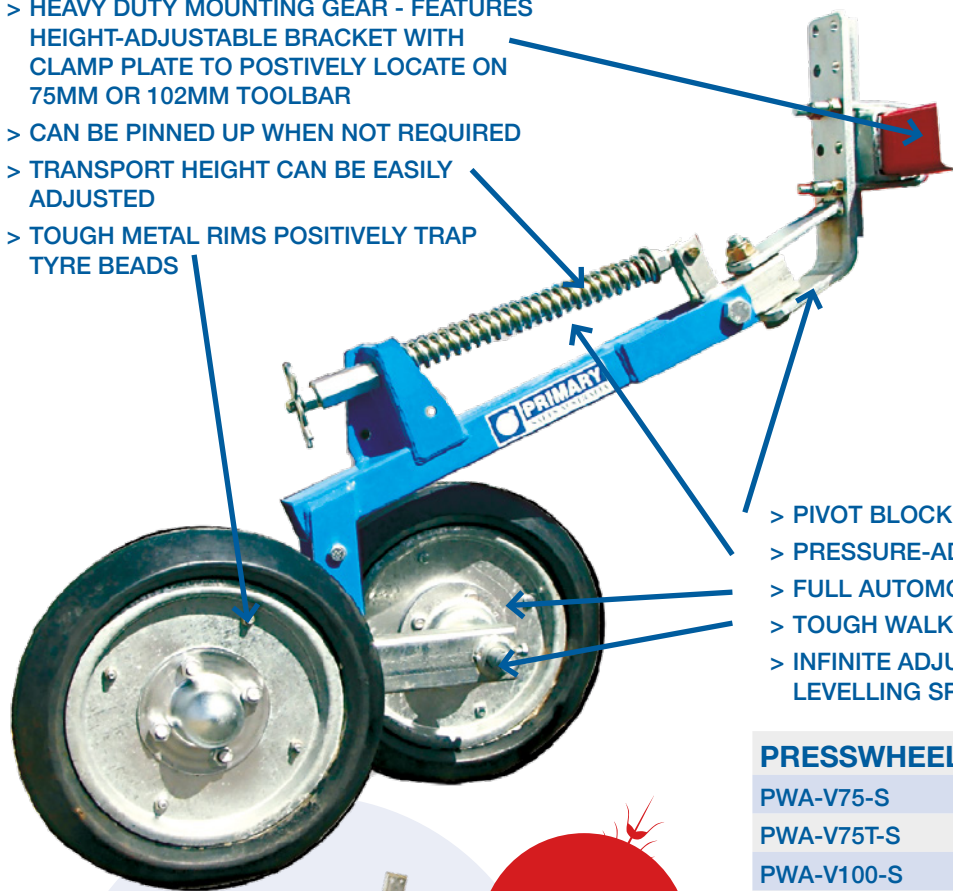
PROVEN DESIGN, FEATURE-PACKED SINGLE OR WALKING BEAM DUAL WHEEL MODELS FOR COMBINES, CULTIVATORS AND CHISEL PLOWS



**PRIMARY**  
SALES AUSTRALIA



- > HEAVY DUTY MOUNTING GEAR - FEATURES HEIGHT-ADJUSTABLE BRACKET WITH CLAMP PLATE TO POSITIVELY LOCATE ON 75MM OR 102MM TOOLBAR
- > CAN BE PINNED UP WHEN NOT REQUIRED
- > TRANSPORT HEIGHT CAN BE EASILY ADJUSTED
- > TOUGH METAL RIMS POSITIVELY TRAP TYRE BEADS



## OPTIONAL TRAVEL LIMITERS

Sustainable furrow shape for maximum water harvesting

Profile features shoulder to enhance furrow definition, promoting uniform, early germination,

Options on press-wheel from 80mm-140mm. The semi-pneumatic tyre flexes during rotation to reduce accumulation of mud



**80MM V TYRES AVAILABLE TO ORDER IN SOFT COMPOUND FOR ACCRETING SOILS**

**DUAL WHEEL, H/D WALKING BEAM FROM \$1336.00**

**SINGLE WHEEL, HEAVY DUTY FROM \$844.00**

- > PIVOT BLOCK ASSEMBLY FEATURES SEALED BEARINGS
- > PRESSURE-ADJUSTABLE
- > FULL AUTOMOTIVE STUB-AXLES, BEARINGS, SEALS AND CAPS ENSURE LONG SERVICE LIFE
- > TOUGH WALKING BEAM ASSEMBLY WITH FULLY SEALED BEARINGS ON EITHER SIDE OF PIVOT POINT
- > INFINITE ADJUSTMENT BETWEEN 185MM AND 400MM, TO MATCH ROW SPACING PERFECTLY. SELF-LEVELLING SPRING ON WALKING BEAM MAXIMISES TRANSPORT CLEARANCE

## PRESSWHEEL KITS (EX TYRE)

PWA-V75-S	Single Press Wheel c/w 75mm Mnt (tyre not included)	\$784.00
PWA-V75T-S	Single Press Wheel c/w 75mm Mnt with travel limiter (tyre not included)	\$819.00
PWA-V100-S	Single Press Wheel c/w 100mm Mnt (tyre not included)	\$794.00
PWA-V100T-S	Single Press Wheel c/w 100mm Mnt with travel limiter (tyre not included)	\$828.00
PWA-V75-D	Dual Press Wheel c/w 75mm Mnt (tyre not included)	\$1,170.00
PWA-V75T-D	Dual Press Wheel c/w 75mm Mnt with travel limiter (tyre not included)	\$1,204.00
PWA-V100-D	Dual Press Wheel c/w 100mm Mnt (tyre not included)	\$1,180.00
PWA-V100T-D	Dual Press Wheel c/w 100mm Mnt with travel limiter (tyre not included)	\$1,214.00

## TYRES

PWHEEL-T-AVM100	15 Tyre Only 100mm V Section Medium - 70 Duro Natural Rubber	\$207.50
PWHEEL-T-AVM80	15 Tyre Only 80mm V Section Medium - 70 Duro Natural Rubber	\$152.50
PWHEEL-T-AVS80	15 Tyre Only 80mm V Section Soft - 55 Duro Natural Rubber	\$152.50

SINGLE WHEEL HEAVY DUTY ASSEMBLY (AS SHOWN) AND SPECIAL NARROW 150MM ROW-SPACING MEDIUM DUTY VERSION ALSO AVAILABLE TO ORDER

PRECISION

MADE TO ORDER PLEASE ORDER EARLY

# HARVEST PRODUCTS

## THE HAY EXPRESS™

STOCKFEEDING IS NOW QUICK, SAFE & EASY!



### THE HAY EXPRESS™ UTE MOUNTED

THE “SON” OF HAY EXPRESS™ MOUNTS EASILY ON ANY SUBSTANTIAL FARM UTE, TO PROVIDE MEASURED DELIVERY OF HAY WHEN A TRAILER IS NOT PRACTICAL OR JUSTIFIED.

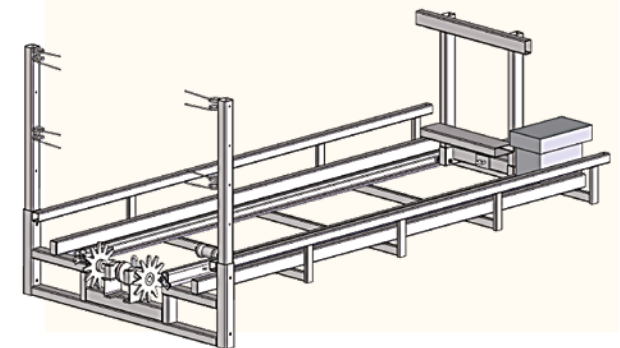
Made to the same high quality and durability as the tailed version and fitted with cordless remote control and a substantial winch.

#### FEATURES

- > Robust steel construction
- > 2 tonne rated load capacity
- > Stable, easy-to-tow design
- > Patented mechanism controls feeds-out-rate
- > Superior W A R N winch mechanism
- > Optional breakaway braking system and lights
- > Suitable for 4x4, 4x3 big square bales (with an optional kit for 3x3 bales)
- > Tandem load-sharing, roller-rocker spring assemblies

#### BENEFITS

- > One person operation
- > Considerable time and labour saving
- > Safety first (stay in the cab while feeding out)
- > Low maintenance
- > Wise investment compared with your current feed-out methods
- > Can be towed by any vehicle with a tow hitch
- > Feeds hay in “biscuits” so stock can feed from all directions with less trampling and wastage compared to windrows



FOR MORE INFORMATION CONTACT YOUR DEALER OR PRIMARY SALES OFFICE

[PRIMARYSALES.COM.AU/HAYEXPRESS](http://PRIMARYSALES.COM.AU/HAYEXPRESS)



# ADAPT-A-GAP™ CROP FINGER SYSTEM

SNAP-ON EXTENSIONS FOR ADJUSTING GAP WIDTH & ANGLE

CANADIAN, U.S. AND AUSTRALIAN PATENTS GRANTED

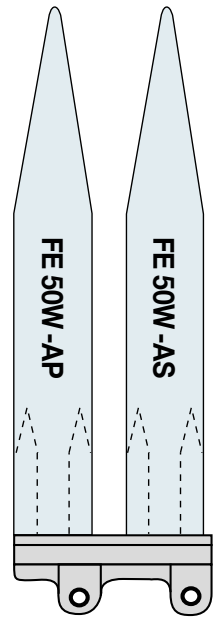


The FE-13, 17, 21 and 30W (Blue) finger extensions are angled upwards to provide an ideal catching area on headers with downwards angled knives, directing crop into the front.

> SIMPLY "SNAP-ON" THE APPROPRIATE EXTENSIONS TO GIVE THE GAP WIDTH / ANGLE YOU WANT AND START RECOVERING THE GRAIN YOU HAVE PREVIOUSLY BEEN LEAVING BEHIND ON THE GROUND.

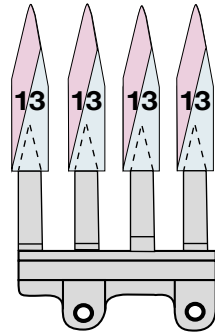
> IN LIGHT CROP DENSITIES, CUT STALKS & HEADS CAN BE LOST OVER THE FRONT BECAUSE THERE IS INSUFFICIENT FIELD DENSITY TO STOP THEM FALLING FORWARD.  
> ALSO INTEGRATES WITH HWSC TO HELP INCREASE WEED SEED PICK UP

**FIELD DENSITY FEEDS IN AT WIDTH "A" AND IS COMPRESSED TO WIDTH "B" FOR MUCH GREATER DENSITY AT THE KNIFE.**



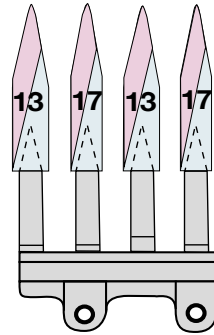
21MM GAP USING PLATFORM EXTENDERS for SORGHUM LUPINS ETC, AND SHATTER-PRONE CROPS

3.62:1



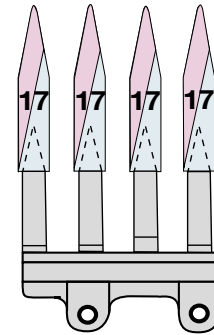
13MM GAP SETTING FE 13 (FE-13-3) extensions for CEREALS 6 BAGS/ACRE 1.2 TONNES/Ha

2.93:1



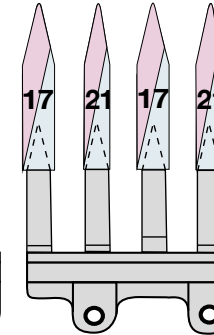
15MM GAP SETTING alternate FE-13 (FE-13-3) with FE-17 (FE-17-3) extensions for CEREALS 6 - 9 BAGS/ACRE 1.2-1.8 TONNES/Ha

2.54:1



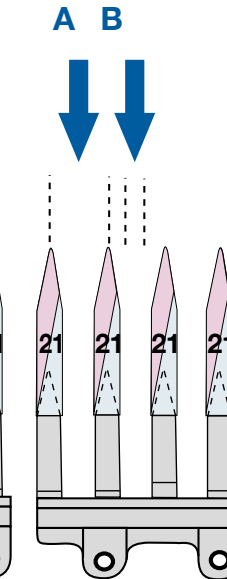
17MM GAP SETTING FE 17 (FE 17-3) extensions for CEREALS 9-12 BAGS/ACRE 1.8-2.4 TONNES/Ha

2.24:1



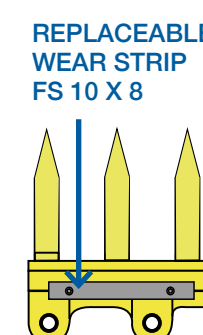
19MM GAP SETTING alternate FE 17 (FE 17-3) with FE 21 (FE 21-3) extensions for CEREALS 12 - 15 BAGS/ACRE 2.4 - 3 TONNES/Ha

2.00:1



21MM GAP SETTING FE 21 (FE-21-3) extensions for CEREALS OVER 15 BAGS/ACRE OVER 3 TONNES/Ha

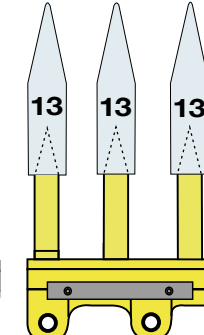
1.81:1



REPLACEABLE WEAR STRIP FS 10 X 8

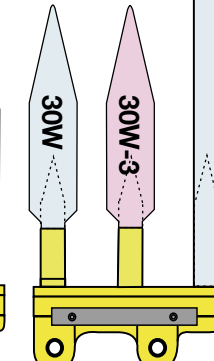
34MM GAP SETTING Bare 3 finger guards for all crops

1.33:1



26MM GAP SETTING FE-13 (FE-13-3) for lighter crops when using 2" centre guards 10 - 13 BAGS/ACRE

2.10:1



21MM GAP SETTING FE-30W for lighter crops when using 2" centre guards 7 - 10 BAGS/ACRE

2.44:1



CROP COMPRESSION RATIOS (BY WHICH FIELD DENSITY IS COMPRESSED AT THE KNIFE)



# ADAPT-A-GAP™ CROP FINGER SYSTEM



**FE PICKUP-2**  
This light duty lifter is designed to pick up down or lodged crops


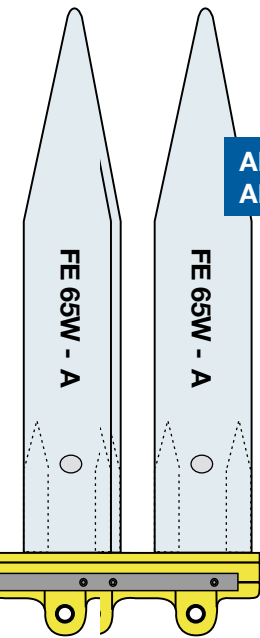


**FE PICKUP-1**  
For lentils, peas and other ground-hugging crops

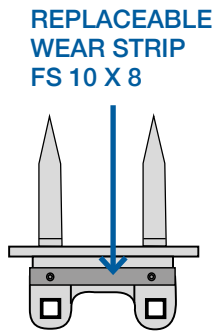


The FE 13-3, 17-3, 21-3 and new **30W-3 (Pink)** fingers provide a straight extension of the knife guard. They are ideal for header knives which are relatively horizontal when lowered.

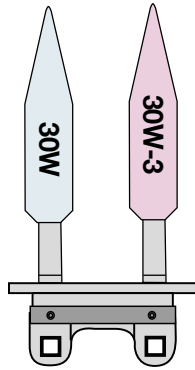
**FIND \$85,000**  
YOU COULD BE LEAVING ON THE GROUND  
**DOWNLOAD THE "CROP LOSS" CALCULATOR**

**ANGLE ADJUSTABLE**



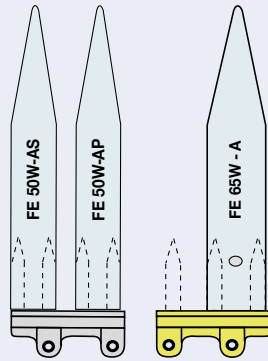
**REPLACEABLE WEAR STRIP**  
FS 10 X 8



**42MM GAP SETTING**  
For 2-finger guards in lighter crops, using FE-30W (blue) or FE-30W-3 (pink) extensions

**32MM GAP**  
Using FE 65W-A platform extenders on 2" centre guards for SORGHUM, LUPINS ETC, and SHATTER-PRONE CROPS

**57MM GAP SETTING**  
Bare 2-finger guards for all crops

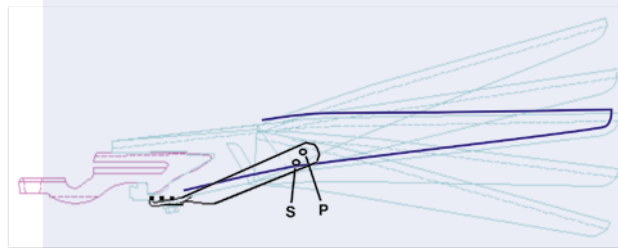


## OPTIONAL EXTENSIONS

THESE OPTIONAL EXTENSIONS GREATLY BOOST THE FLEXIBILITY, CONVENIENCE AND EFFICIENCY WITH WHICH CROPS SUCH AS SORGHUM, LUPINS, SOY BEANS, CHICKPEAS AND FABA BEANS MAY BE PROFITABLY HARVESTED.

The system is very useful for combing-up wind or hail-damaged or tangled crops.

The angle adjustable version is the most popular, on which the catching area of the guard can be adjusted to positions which best suit most header front types and cutter bar positional requirements.

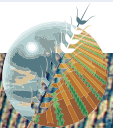


- |                |  |  |
|----------------|--|--|
| <b>1</b>       | <b>MAXIMUM UPLIFT</b><br>(FE50WA-P)    | <b>USE ON HEADERS WITH DOWNWARD ANGLED KNIVES</b>                    |
| <b>2</b>       | <b>MEDIUM UPLIFT</b><br>(FE50WA-S)     | <b>IDEAL FOR KNIVES WHICH ARE RELATIVELY HORIZONTAL WHEN LOWERED</b> |
| <b>3&amp;4</b> | <b>STRAIGHT</b><br>(FE50WA-P/FE50WA-S) |  |
| <b>5</b>       | <b>MEDIUM PICKUP</b><br>(FE50WA-P)     |  |
| <b>6</b>       | <b>MAXIMUM PICKUP</b><br>(FE50WA-S)    | <b>USE FOR COMBING UP OF DOWN AND TANGLED CROPS</b>                  |

### PLATFORM EXTENDER FINGER OPTION

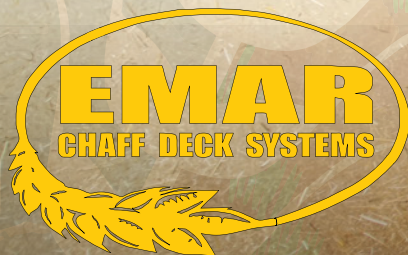
The metal clip uses one of 3 locating slots and choice of 2 hinging hole positions (using a roll-pin) to provide up to 6 angle settings. With the roll-pin assembled in the "P" position (best suited to Inter 1040/42/52, Case 1010/20, MacDon and Claas) angle positions 1, 3 and 5 are available. In the "S" position, angles 2, 4 and 6 are available (best suited to Honey Bee, John Deere, with 3" knife stroke, and most other popular fronts).

3.20:1



# STOP WEEDS IN THEIR TRACKS

IMPROVE YIELD BY REDUCING  
WEED COMPETITION

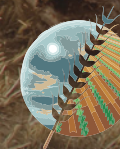


ADD THE EMAR CHAFF DECK TO YOUR WEED CONTROL TOOL KIT & STOP  
SPREADING WEED SEEDS OUT THE BACK OF YOUR COMBINE HARVESTER

[chaffdeck.com](http://chaffdeck.com)

IMPROVES  
SUMMER SPRAYING  
BY REDUCING DUST  
EASY TO USE  
LOW  
MAINTENANCE

ORDER  
NOW



**PRIMARY**  
SALES AUSTRALIA

# VIBRA-MAT

## REDUCE HARVEST LOSS

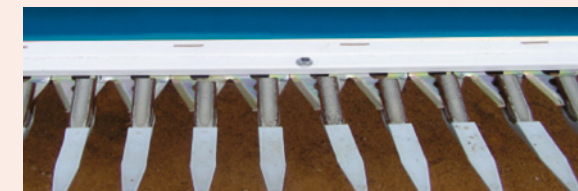


**THE VIBRA-MAT  
ELIMINATES A  
MAJOR SOURCE  
OF HARVEST  
LOSSES ON  
YOUR RIGID  
FRONT!**

The reinforced vinyl mat is fitted to rear of the knife which, as it reciprocates, converts the normally static area between the knife and the auger into a "live" surface to prevent build-up of crop and the resulting intermittent crop flow. "Bunched" crop flow is difficult to efficiently thresh and often results in unthreshed or partially threshed heads being walked out of the rear of the machine with the straw.

The "Vibra-Mat" is a simple, low-cost 1 means of providing smooth, continuous crop flow for maximum throughput, threshing efficiency and minimised grain losses.

**VIBRA-MATS ARE NOW  
AVAILABLE FOR CASE 3050,  
NH 760CG AND CLAAS VAR**



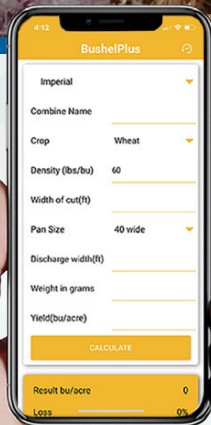
# MORE GRAIN IN THE BIN LESS IN THE FIELD



**EXCLUSIVE**  
BUSHEL PLUS™  
EXCLUSIVE TO  
PRIMARY SALES  
AUSTRALIA



**FAST & SAFE  
COMBINE HARVEST  
LOSS CALIBRATION**

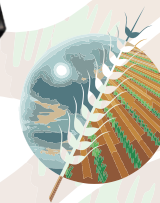


**SAVINGS**  
(BARLEY)  
**\$35,000**  
8% TO 3% LOSS  
IN 1,000 Ha  
PROGRAM 2T/Ha

**ORDER  
NOW**



**INTEGRATED APP  
FOR QUICK & EASY  
LOSS CALCULATION**



**PRIMARY  
SALES AUSTRALIA**

**(08) 9462 1910**

**PRIMARYSALES.COM.AU**

# TILLAGE 2021



**NATIONAL**  
CUSTOMER SERVICE  
(08) 9462 1910  
FAX 1300 213 091  
SALES@PRIMARYSALES.COM.AU

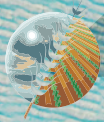
**1** WESTERN AUSTRALIA  
MICHAEL BAILEY  
0407 990 794  
(08) 9250 3500  
SALES@PRIMARYSALES.COM.AU

**2** SOUTH AUSTRALIA  
KEITH HOPKINS  
0428 990 973  
(08) 8345 4118  
ADELAIDE@PRIMARYSALES.COM.AU

**3** VICTORIA & SOUTHERN NEW SOUTH WALES  
BRIAN LEGG  
0436 608 435  
(08) 8345 4118  
BENDIGO@PRIMARYSALES.COM.AU

**4** CENTRAL & NORTHERN NEW SOUTH WALES  
& QUEENSLAND  
WARRICK FINLAY  
0429 779 473  
(02) 6882 2844  
DUBBO@PRIMARYSALES.COM.AU

PRIMARY SALES AUSTRALIA  
PTY. LTD ABN 90 608 575 051



**PRIMARY**  
SALES AUSTRALIA

PRIMARYSALES.COM.AU



TWITTER

