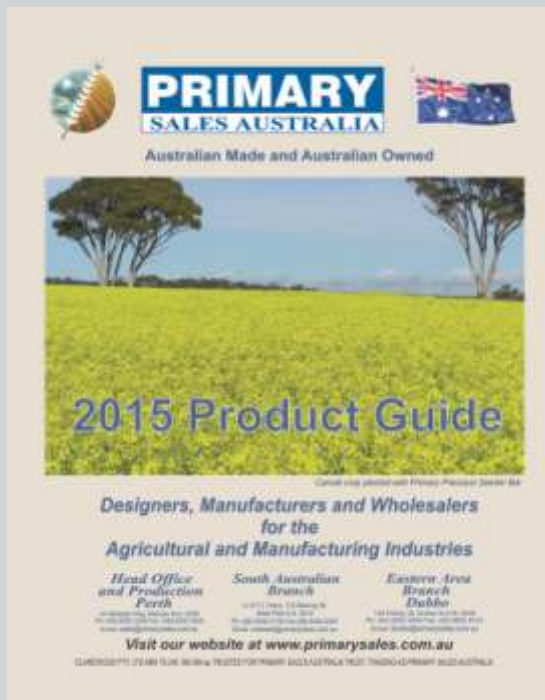




*Use this list in conjunction
with the 2015 Product Guide*



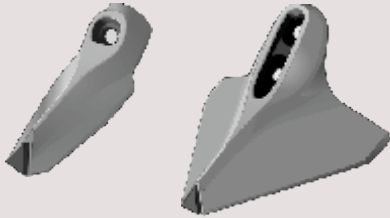
**WELCOME TO THE CURRENT AUSTRALIAN DOMESTIC TILLAGE
RETAIL PRICE LIST FOR PRIMARY SALES AUSTRALIA.
MOST OF THE POPULAR PRODUCTS ARE LISTED HERE. FOR
ALL OTHER PRICES, CONTACT YOUR LOCAL DEALER OR
PRIMARY SALES AUSTRALIA.**

- Page 1 Points #1 to #33....tipped and plain*
- Page 2 Points #41 to #97...all tungsten tipped*
- Page 3 Primary Precision Seeder parts, Primary Coil Tines*
- Page 4 Presswheels, Coulters, Disc Seeding modules, UTS tines*
- Page 5 Assemblies...Contour Drill and Paralink modules,*
- Page 6 Fertiliser boots, brackets and clips*
- Page 7 Seed (or single shoot) boots*
- Page 8 Adaptors, residue deflectors, liquid applicators*
- Page 9 Bolts, nuts, etc.*
- Page 10 Terms and conditions, Warranty statement*



January 2015 Tillage Price List

Revised prices across the full Primary Sales product range are effective 2nd. January 2015. These prices are expressed in A\$, are recommended retail ex-Perth, Dubbo or Adelaide and apply only to the Australian domestic marketplace. Prices and product specifications are subject to change without notice. Purchases may be made through our comprehensive network of Agricultural Machinery Dealers or Agricultural Merchandise outlets.

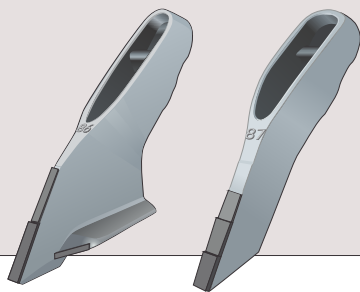


For a brief statement of PSA trading terms and conditions of sale, see foot of Website home page.

View or download this list from our website at
www.primarysales.com.au

PRIMARY POINTS Tipped and plain PR-1 to PR-33

PLAIN (UNTIPPED)		PRIMARY POINTS Tipped and plain PR-1 to PR-33		TUNGSTEN CARBIDE TIPPED	
PRICE Exc GST	PRICE Inc GST	PART NO. (“T” = TIPPED)	DESCRIPTION	PRICE Exc GST	PRICE Inc GST
14.00	15.40	PR 1-T	4 1/2" Combine	25.25	27.78
		PR 2-DB	4 1/2" Deep blade, direct drill	35.40	38.94
14.80	16.28	PR 3-T	4" Combine, low profile	26.05	28.66
15.25	16.78	PR 4-T	5" Combine	26.50	29.15
		PR 5-T	5" Horwood Bagshaw combine	29.15	32.07
14.65	16.12	PR 7-T	1 1/2" Cultivator / ripper	25.90	28.49
		PR 8-T	6" Cultivator, 44° stem angle	31.50	34.65
		PR 9-T	7" Cultivator, 44° stem angle	33.20	36.52
		PR 9-DB	7" Deep blade cultivator	40.60	44.66
24.25	26.68	PR 10-T	8" Cultivator, 44° stem angle	35.50	39.05
24.30	26.73	PR 11-T	2 1/2" Scarifier / ripper	35.55	39.11
25.20	27.72	PR 12-T	6" Scarifier buster	36.45	40.10
26.50	29.15	PR 13-T	7" Scarifier	37.75	41.53
33.00	36.30	PR 14-T	8" Scarifier, low profile	44.25	48.68
		PR 15-T	2 1/2" Cultivator	36.15	39.77
		PR 16-T	6" Cultivator (7/16" bolts)	43.20	47.52
		PR 16-2-T	6" Cultivator (1/2" bolts)	45.00	49.50
		PR 17-T	7 1/2" Cultivator (7/16" bolts)	42.90	47.19
		PR 17-2-T	7 1/2" Cultivator (1/2" bolts)	46.15	50.77
33.00	36.30	PR 18-T	2 1/2" Chisel plow	44.25	48.68
22.85	25.14	PR 20-T	6" Cultivator, 35° stem angle	34.10	37.51
22.15	24.37	PR 21-T	7" Cultivator, 35° stem angle	33.40	36.74
23.40	25.74	PR 22-T	8" Cultivator, 35° stem angle	34.65	38.12
16.40	18.04	PR 23-T	2" Cultivator / combine	27.65	30.42
30.55	33.61	PR 25-T	9" Scarifier, low profile	41.80	45.98
27.65	30.42	PR 26-T	2 1/2" HB Stubblemaster ripper	38.90	42.79
44.75	49.23	PR 27-T	8" HB Stubblemaster scarifier	56.00	61.60
		PR 30-DB	8" Deep blade cultivator (7/16" bolts)	52.75	58.03
		PR 30-2-DB	8" Deep blade cultivator (1/2" bolts)	53.75	59.13
		PR 31-DB	6" Deep blade cultivator (7/16" bolts)	51.75	56.93
		PR 31-2-DB	6" Deep blade cultivator (1/2" bolts)	53.75	59.13
		PR 33	1/2" Knife point for JD 1870 Conserva pak	81.00	89.10
		PR33-SGL	Shin guard (long) for JD 1870 Conserva pak	32.45	35.70



January 2015 Retail Tillage Price List

PRIMARY POINTS (cont'd) PR 41 to PR 97 WITH TUNGSTEN CARBIDE (T.C.) WEAR PROTECTION

PART NO.	DESCRIPTION	PRICE	
		Exc GST	Inc GST
PR 41	2 1/2" Chisel plow slip-on tip	53.40	58.74
PR 42	Spear point for use with PA42-1 adaptor	32.20	35.42
PR 44	Slip-on Knife point 12mm, cast, heat treated, (includes roll pin)	94.50	103.95
PR 45	Slip-on Super Seeder, cast, heat treated, (includes roll pin)	113.75	125.13
PA-15554	"Slimline" wedge for 1/2" bolts @ 45mm centres	15.00	16.50
PA-15555	"Slimline" wedge for 7/16" bolts @ 45mm centres	15.00	16.50
PA-15557	"Slimline" wedge for 1/2" bolts @ 57mm centres	15.00	16.50
<u>MORRIS 'GUMBO' - PSA replacement parts</u>			
PR 50	Knife point, cast Nihard, 90mm long	72.25	79.48
PR 51	Deep Knife point, cast Nihard, 130mm long	80.50	88.55
PR 54	Full 4" wing plate, with Tungsten Carbide protection	42.15	46.37
PR 54HD	Full 4" wing plate, heavy duty with TC protection	56.20	61.82
PR 55	Full 5" wing plate, with Tungsten Carbide protection	57.40	63.14
PR 57	Side plate LH or RH	13.35	14.69
<u>CONCORD - PSA replacement parts</u>			
PR 60	Knife point to suit Anderson opener, 150mm long	92.90	102.19
PR 60 HD	Knife point PR 60, with extra TC and side prot'n	110.50	121.55
PR 63	Wedge plate, to suit Anderson opener	29.70	32.67
PR 64	Full wing plate 7" wide " " (inc. bolt & nut)	95.20	104.72
PR 64-1	Full wing plate 6" wide " " " "	92.00	101.20
PR 84-DB	Scarifier Super Seeder (50mm wing)	72.80	80.08
PR 84-DB-TW	Scarifier Super Seeder (50mm T.C. wing)	83.00	91.30
PR 86-DB	Super Seeder, heavy duty (60mm wing)	70.20	77.22
PR 86-DB-TW	Super Seeder, heavy duty (60mm T.C. wing)	79.00	86.90
PR 86-DB-ATW	Super Seeder, heavy duty (angled T.C. wing)	85.00	93.50
PR 87	Knife point, 16mm, heavy duty (two x 1/2" bolts)	78.50	86.35
PR 90	"Thomas Tine" point (no Tungsten Carbide)	18.50	20.35
PR 91	Knife point, 20mm (single bolt, 7/16")	35.75	39.33
PR 92M	Mini T - boot	28.10	30.91
PR 92M-TW	Mini T - boot (T.C. wing)	36.80	40.48
PR 93	Baker style T-boot	37.80	41.58
PR 93-TW	Baker style T-boot (T.C. wing)	45.60	50.16
PR 94	Super Seeder (50mm wing, single bolt 7/16")	46.30	50.93
PR 94-TW	Super Seeder (50mm T.C. wing)	54.60	60.06
PR 94-DB	Super Seeder (60mm wing deep blade, h / duty)	52.10	57.31
PR 94-DB-TW	Super Seeder (60mm, T.C. wing)	61.10	67.21
PR 96-DB	Super Seeder (60mm wing, two x 7/16" bolts)	58.00	63.80
PR 96-DB-TW	Super Seeder (60mm T.C. wing)	68.70	75.57
PR 96-DB-ATW	Super Seeder (60mm angled T.C. wing)	73.90	81.29
PR 97	Knife point, 12mm (two x 7/16" bolts)	71.25	78.38

For Bourgault
3310 & 3320 Paralink parts,
see listing P5

For Morris
Contour Drill parts,
see listing P5

PRIMARY PRECISION SEEDER & COIL TINE parts



PRIMARY PRECISION SEEDER PARTS

PART NO.	DESCRIPTION	PRICE Exc GST	PRICE Inc GST
P P-W-190-3327	Winged point, heat treated, 190 mm Tungsten Carbide leading edge	145.00	159.50
P P-W-150-3327	Winged point, heat treated, 150 mm Tungsten Carbide leading edge	135.00	148.50
P P-K-200-3325	Knife point, heat treated, 200 mm Tungsten Carbide leading edge	127.00	139.70
P P-K-150-3325	Knife point, heat treated, 150 mm Tungsten Carbide leading edge	114.00	125.40
P P-RP-3325	Roll pin, 1" x 3/8" (two req'd per point)	ea1.00	ea1.10
P FT-3107-2	Fertiliser Tube, hot dip galvanised (inc. hose holder)	123.70	136.07
P FT-3003 SQ	Fertiliser injector tube with TC wear protection	60.35	66.39
P FT-3325-LHDK	Liquid fert. tube, stainless steel 10mm od, for PPS Knife point	43.35	47.69
P FT-3327-LIQW	Liquid fert. tube, stainless steel 10mm od, for PPS Winged point	28.30	31.13
P FT-PFC-3001	Poly fertiliser cup, complete with stainless T-bolt clamp	23.63	25.99
P PW-RH-2873	Press wheel rim half, galvanised steel	26.00	28.60
P PW-TYWV-2965	Press wheel tyre, 140mm wide "V"	112.00	123.20
P ST-3087	Reopener, spring steel, heat treated	21.53	23.68
P ST-3087-4	Seed tube only for 3087 re-opener	17.25	18.98
P ST-3087-SH	Short re-opener to suit bolt on wear plate	22.50	24.75
P ST-3087-WP25	25mm Wear plate C/w bolts for 3087 re-opener	20.50	22.55
P ST-3087-WP40	40mm Wear plate C/w bolts for 3087 re-opener	22.55	24.81
P ST-AALRB	38mm Bare rubber boot suits angle-adjustable mount	32.25	35.48
P ST-AAMOUNT	Angle-adjustable mount for 38mm bare rubber boot	22.15	24.37
P ST-RBB-SS-FM	Spring steel mounting bar for angle-adjustable 38mm rubber boot	16.75	18.43
P T-FTRAC-3275	Roller assembly complete, for roller box assembly	41.80	45.98
P ST-LRBTL-25	Tail, narrow, 25mm wide, to suit rubber flexiboot 38mm i/d	15.23	16.75
P ST-LRB-38-FM	38mm Forward mount boot C/w bolt and spring washer	32.80	36.08
P T-LTS-3339	Tine leg lower, spring steel, heat treated	115.00	126.50
P CLT-STM-60	Coulter Assembly, single, tine mounted with 60 ripple disc	939.50	1033.45

PRIMARY COIL TINES

PART NO.	DESCRIPTION	PRICE Exc GST	PRICE Inc GST
PCT CP3A	Coil tine clamp plate for 3" RHS*	14.00	15.40
PCT CP4A	Coil tine clamp plate for 4" RHS*	14.90	16.39
PCT FT-235	PCT fixed fertiliser tube 35mm O.D.	41.40	45.54
PCT FT-HC	Coil tine dual banding clamp	5.35	5.89
PCT HA-2	Coil tine height adjuster (long)	7.90	8.69
PCT L75A	Coil tine locker for 3" RHS*	22.35	24.59
PCT L102A	Coil tine locker for 4" RHS*	24.00	26.40
PCT MUD-1	Mud shield for coil tine fertiliser boot	8.25	9.08
PCT SBB-2	Coil tine bracket for single or dual shoot	18.00	19.80
PCT SBB-3	Coil tine bracket (short) for single shoot	17.90	19.69
PCT TT-3	Residue deflector (trash tube) for coil tine	28.00	30.80
PCT TT-4	Residue deflector for PCT-FT-235 and PCT SBB-3	27.00	29.70
PCT UB3A	Splayed "U" bolt with Nyloc nuts to suit 3" RHS*	11.75	12.93
PCT UB4A	Splayed "U" bolt with Nyloc nuts to suit 4" RHS*	12.10	13.31
PCT D-LH or RH	Primary coil tine, Diamond mount (L or R hand)	161.00	177.10
PCT V-LH or RH	Primary coil tine, Vertical mount (L or R hand)	161.00	177.10



**Other sizes
available to
order*

PRESSWHEEL, COULTER, DISC SEEDING Assemblies and UTS low disturbance tines



PRESS WHEEL ASSEMBLIES

For Combines, Cultivators and Chisel Plows:

	PRICE Exc GST	PRICE Inc GST
Dual wheel & Heavy duty walking beam, with H/D adjustable mounting gear:		
15" dia. with 80mm "V" tyre on steel rim	954.00	1049.40
15" dia. with 100mm "V" tyre on steel rim	1040.00	1144.00
Single wheel assembly, H/ duty, with H/D adjustable mounting gear:		
15" dia. with 80mm "V" tyre on steel rim	599.00	658.90
15" dia. with 100mm "V" tyre on steel rim	642.00	706.20
Single wheel assembly, medium duty 15" dia. with 80mm V tyre for narrow rows	573.00	630.30
Additional cost for Travel Limiters (for h/duty wing-mounted assemblies)	13.00	14.30

COULTER ASSEMBLIES



	PRICE Exc GST	PRICE Inc GST
CLT-TBM-60 Coulters assembly, Twin bar-mount, 60 ripple disc, c/w mounting hardware	1077.00	1184.70
CLT-TBM-60-HDA Coulters assembly, Twin bar-mount, heavy duty, adjustable, 60 ripple disc	1316.00	1447.60
CLT-TBM-60-HD Coulters assembly, Twin bar-mount, heavy duty, fixed row, 60 ripple disc	1137.00	1250.70
CLT-SBM-60 Coulters assembly, Single bar-mount, 60 ripple disc, c/w mounting hardware	818.50	900.35
Replacement 500mm dia. 60 ripple disc	69.00	75.90

TWIN DISC SEEDING ASSEMBLIES

PART NO.

	PRICE Exc GST	PRICE Inc GST
DSM-TWIN18BMWV Twin 18" disc seeding module, bar mount, complete with wide 'V' presswheel tyre	2234.30	2457.73
CLT-PD-SB-18-04 Single-bevel 18" disc	65.00	71.50



PRIMARY "UTS" TINES (low disturbance)

PART NO.

	PRICE Exc GST	PRICE Inc GST
UTS-P-1 Ultra-T-Seeder point, cast, with Tungsten Carbide protection	95.90	105.49
UTS-P-K-FAB-04 Knife point with tungsten carbide protection	120.30	132.33
UTS-T-CC-EO Primary tine to suit Concord edge-on shank	59.65	65.62
UTS-T-FC550-2HD Primary tine to suit Flexicoil 550 and later 350	195.65	215.22
UTS-T-SMALE-HD Primary tine to suit Smale Heavy duty tine	200.00	220.00
UTS-FT-1 Fertiliser tube for double shoot (welded assemblies)	41.45	45.60
UTS-FT-2 Fertiliser tube for double shoot (bolted assemblies)	44.75	49.23
UTS-FT-3 Fertiliser tube for double shoot (20mm mount plate)	43.40	47.74
UTS-SBB-1 Bracket for single-shoot boot	15.45	17.00
UTS-RD-2 UTS Residue deflector (trash guard)	18.80	20.68



Tines and boots to suit many models are available to order

MORRIS and BOURGAULT Module replacement parts

MORRIS CONTOUR 2 - PSA replacement parts

PART NO.	DESCRIPTION	PRICE	
		Exc GST	Inc GST
MO-C2-DS-FT	Contour 2 Fert tube adjustable	51.25	56.38
MO-C2-LIQ	Contour 2 Liquid tube 10mm	23.00	25.30
MO-C2-P	Contour 2 Straight point	83.50	91.85
MO-C2-P-16	Contour 2 Heavy Duty 16mm point	99.00	108.90
MO-C2-RD	Contour 2 Residue deflector	26.80	29.48
MO-C2-STC-40	Contour 2 Seed tube (3 holes) for 32mm id hose	57.00	62.70
MO-C2-TL	Contour 2 Short tine leg	118.50	130.35
MO-C2-WING	Contour 2 Wing for Morris paired row system	80.65	88.72
MO-CD2-SHANK	Contour 2 Shank - one piece tine leg / point	130.20	143.22
MO-CD2-P	Contour 2 Point (10° angle, superseded)	85.15	93.67



*Other superseded designs available in limited quantities POA
A single shoot bracket will be available for this season POA*

MORRIS CONTOUR DRILL - PSA replacement parts

PART NO.	DESCRIPTION	PRICE	
		Exc GST	Inc GST
MO-CD-LIQ-T	Liquid tube to suit MO-CD-TL, 5/16" od stainless	20.55	22.61
MO-CD-MT-32	Steel fertiliser tube suit 32mm ID hose	12.80	14.08
MO-CD-P	Replacement point for MO-CD-TL	86.00	94.60
MO-CD-SHANK	Shank - one piece tine leg / point	129.00	141.90
MO-CD-SBB	Single shoot bracket to suit shank	39.70	43.67
MO-CD-STC 25-32	Steel seed tube, curved, for single and d. shoot assy (25mm opener)	52.10	57.31
MO-CD-STC 40-32	Steel seed tube, curved, for single and d. shoot assy (40mm opener)	55.20	60.72
MO-CD-TL	Tine leg Assy c/w M10 x 35 G10.9 bolt & nuts x 4	104.00	114.40
MO-CD-WING	Wing for Morris paired row system	74.95	82.45
MO-CD-SLEEVE 28.5	Sleeve suits both MO-CD and MO-C2 for Morris 28.5mm hose	3.80	4.18



BOURGAULT 3310/3320 Paralink - PSA replacement parts

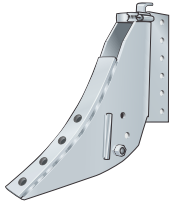
PART NO.	DESCRIPTION	PRICE	
		Exc GST	Inc GST
BG-3310-TA	Tine adaptor to suit Paralink	88.00	96.80
BG-3310-P	Point to suit Paralink fitted with BG-3310-TA	82.00	90.20
BG-3310-P-16	Point Heavy duty, 16mm wide for BG-3310-TA	97.50	107.25
BG-3310-ST	Seed tube to suit Paralink " " "	47.95	52.75
BG-3310-STC	Seed tube, curved, to suit Paralink " " "	55.50	61.05
BG-3310-ST-SB	Seed tube, side banding	79.60	87.56

(A plastic liquid tube can be fitted to this assembly)

These parts are suitable for 3310 and 3320 SE and QDA variants

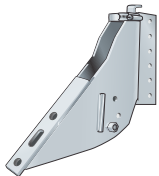
FERTILISER BOOTS, BRACKETS and CLIPS

PART NO.		PRICE Exc GST	PRICE Inc GST
Compact fertiliser boots			
ST-DPB-CF3	1/2" x 57mm bolthole centres (for Flexicoil 550 etc.)	52.00	57.20
ST-DPB-CF4	1/2" x 45-57mm b'hole centres (for Flat culti tines etc.)	54.80	60.28



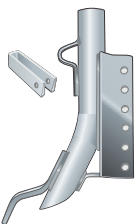
Dual purpose boots

ST-DPB-EO-F	1/2"holes, for Edge-on Flexicoil tine	51.00	56.10
ST-DPB-F1	7/16" holes x 45mm centres	52.50	57.75
ST-DPB-F2-5	1/2" holes x 45-50mm centres	52.50	57.75
ST-DPB-F3	1/2" holes x 57mm centres	52.50	57.75
ST-DPB-F4	45-57mm centres (Ezee-on, Bourgault, Horwood Bagshaw)	52.50	57.75
ST-DPBF3Gas	for Gas application (1/2" holes x 57mm ctrs)	67.50	74.25



Large dual purpose boot

ST-DPB-LF1	7/16" holes x 45mm centres	54.50	59.95
ST-DPB-LF2-5	1/2" holes x 45-50mm centres	54.50	59.95
ST-DPB-LF3	1/2" holes x 57mm centres	54.50	59.95
ST-DPB-LF4	Ezee-on, Bourgault, Horwood Bagshaw	57.00	62.70



Single bolt fertiliser boots (& clamps for ST-UNI-R35)

ST-FE270-F	Fert. tube for J.D. 275, Fwd 270/ 853	52.50	57.75
ST-UNI-R35	Fert. tube for most single bolt cultivators / drills	48.50	53.35
TCB-U-1640	Clamp bracket for ST-UNI-R35,16mm x 40mm tine	4.10	4.51
TCB-U-1650	Clamp bracket for ST-UNI-R35,16mm x 50mm tine	4.30	4.73
TCB-U-1675	Clamp bracket for ST-UNI-R35,16mm x 75mm tine	5.05	5.56

Single boot brackets

ST-SBEO1/2/3/4*	for edge-on, single bolt tines	23.80	26.18
ST-SBHB-1SQ	for Horwood Bagshaw 25mm Square tine	27.85	30.64
ST-SBEO-FC*	for Edge-On Flexicoil	28.60	31.46
ST-SBB-1	45mm centres (two x7/16" holes)	29.80	32.78
ST-SBB-2-5	45-50mm centres (two x 1/2" holes)	29.80	32.78
ST-SBB-3	57mm centres (two x 1/2" holes)	29.80	32.78
ST-SBB-4	45-57mm ctrs (two x 1/2"holes, flat foot)	29.80	32.78

*Tine clips to suit SBEO brackets

ST-CB-1640	16mm x 40mm for ST-SBEO bracket	5.45	6.00
ST-CB-1665	16mm x 65mm tine	6.15	6.77
ST-CB-2055	20mm x 55mm for Forward 280 tine	5.80	6.38
ST-CB-2065	20 x 65mm Edge-on Flexicoil, Ch. Terramaster, JD 300	6.75	7.43
TCB-U-2525	for Horwood Bagshaw Square tine bracket	4.40	4.84

SEED BOOTS and Other Components

SEED (or single shoot) BOOTS





PART NO.		PRICE Exc GST	PRICE Inc GST
ST-ADJ-132/35/38	Seed Tube (Steel) adjustable 32, 35 or 38mm O.D.	36.00	39.60
ST-ADJ-141	Seed Tube (Steel) adjustable 41mm O.D.	36.00	39.60
ST-FB-32TUBE	Poly. tube 32mm O/D, per foot	1.70	1.87
ST-FB-32 ROLL	Poly. tube 32mm O/D, per 30m roll	145.00	159.50
ST-FB-38TUBE	Poly. tube 38mm O/D, per foot	2.20	2.42
ST-FB-38 ROLL	Poly. tube 38mm O/D, per 30m roll	180.00	198.00
ST-RFB	Rubber Flexi boot (32mm ID), exc. tail	35.50	39.05
ST-RFB-LM	Rubber F. boot (low mount) exc. tail	41.60	45.76
ST-RB-V-C	Compact F. boot (for Morris etc.) 32mm inc. C tail	44.75	49.23
ST-RFBTAIL-45	Straight 45mm tail to suit rubber Flexi boot	13.75	15.13
ST-RFBTAIL-C	Curved tail to suit rubber Flexi boot	14.75	16.23
ST-RFBTAIL-Y	"Y" Splitter tail to suit rubber Flexi boot	25.40	27.94
ST-L-RB	Large Rubber boot (38mm ID), exc. tail	36.50	40.15
ST-L-RB-V-C	Lge compact f. boot (Morris etc.) 38mm inc. C tail	48.10	52.91
ST-LRB-CCLD	Large Rubber f. boot for Concord low-dist.	39.25	43.18
ST-LRB-LM	Lge flexi boot (low mount) exc. tail	43.10	47.41
ST-LRBTAIL-45	Large 45mm Straight tail to suit ST-LRB	13.75	15.13
ST-LRBTAIL-C	Large Curved tail to suit ST-LRB	16.00	17.60
ST-LRBTAIL-Y	Large "Y" Splitter tail to suit ST-LRB	25.40	27.94
ST-LRB-TailY80	"Y" Splitter tail- 80mm wide	27.20	29.92
ST-TWIN-SF1	Dual tube boot assembly 7/16" x 45mm cts *(inc. steel tube)	70.00	77.00
ST-TWIN-SF2	Dual tube boot assembly 1/2" x 45mm cts *(inc. steel tube)	70.00	77.00
ST-TWIN-SF3	Dual tube boot assembly 1/2" x 57mm cts *(inc. steel tube)	70.00	77.00

*Side wings and replacement tubes also available


PART NO.	COMPONENTS (plates, spigots, etc.)	PRICE Exc GST	PRICE Inc GST
SDP-1	Seed depth plate for single bolt tines (PR91, PR 94)	21.00	23.10
ST-CL-50	Flat conn. links for ST-ADJ seed tube (sold in pairs)	ea 2.25	ea 2.48
ST-MUD-R	Mud shield for edge-on or single bolt tines	7.80	8.58
ST-RED 35-32	Reducer, 35mm O/D to 32mm O/D	6.10	6.71
ST-RED 38-32	Reducer, 38mm O/D to 32mm O/D	6.10	6.71
ST-RED 44-32	Reducer, 44mm O/D to 32mm O/D (more sizes avail.)	6.30	6.93
ST-SLEEVE 32	Sleeve 65mm long, 32mm O/D, 29mm I/D	4.00	4.40
ST-SLEEVE 35	Sleeve 65mm long, 35mm O/D, 32mm I/D	3.75	4.13
ST-SLEEVE 38	Sleeve 65mm long, 38mm O/D, 35mm I/D	3.95	4.35
ST-Y-01 35	"Y" Piece to split delivery for dual boots (35mm O/D)	39.25	43.18
TBP-3	Tine backing plate, 3mm thick	4.00	4.40
TBP-5	Tine backing plate, 5mm thick	4.20	4.62

ADAPTORS, RESIDUE DEFLECTORS, LIQUID APPLICATORS

PART NO.	ADAPTORS	PRICE Exc GST	PRICE Inc GST
 PA-42-1	Converts Janke tine to accept PR 42 Spear point	29.80	32.78
PA-45	C/Plow (57mm ctrs) adaptor for PR 41 Ripper / aerator	99.30	109.23
PA-48	Blade to adapt PR-41 to early Agroplow	108.00	118.80
PA-48-2	Blade to adapt PR-41 to Ausplow ripper (spring steel)	99.65	109.62
PA-54	For fluted Connor Shea tines to fit PR 91, 94 TW	10.75	11.83
PA-54D	For wider "D" sect. C. S. tines to fit PR 91, 94 TW	11.95	13.15
PA-55	Adaptor for Horwood Bagshaw fluted tines	10.25	11.28
PA-57	Adapts 76mm ctrs Chisel plow tines to fit PR 18	18.30	20.13
PA-63	Adapts H. B. "square" tines to fit PR 91, PR 94 etc	5.50	6.05
PA-70-CC	Replacement foot for Concord 43° transition shank	80.00	88.00
PA-71-CC	Replacement foot for Concord 50° transition shank	80.00	88.00
PAC-84-1	Retains PR 84 DB-TW on MF, JS, IH scarifier tines	5.60	6.16
PAC-84-2	Retains PR 84 DB-TW on CJD scarifier tines	6.00	6.60
PAC-84-3	Retains PR 84 DB-TW on CSN scarifier tines	5.40	5.94
PAC-84-4	Retains PR 84 DB-TW on HB Series 1 Stubblemaster	6.40	7.04
PA-93-FT	Adapts PR 93 to fit Duncan Drill (for double shoot)	77.40	85.14
PA-96-SC	Replacement 2-bolthole foot for scarifier tines	33.40	36.74
PA-96-SC-L	Cutting / welding cost for PA-96-SC	33.00	36.30

PART NO.	RESIDUE DEFLECTORS	PRICE Exc GST	PRICE Inc GST
 TT-FC-350	Most "C" shank cultivators	32.00	35.20
TT-FC-EO	Edge-on Flexicoil	32.00	35.20
TT-HB-350	Horwood Bagshaw 350 Scaribar	33.00	36.30
TT-JD-C-2	John Deere combine & 270 cultivator	32.00	35.20
TT-SH-C	Shearer 580 tine	32.00	35.20
TT-SH2-C	Shearer 620 tine	32.00	35.20

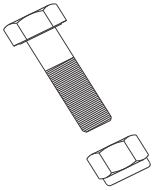
Note: Many other models available to order

PART NO.	LIQUID APPLICATORS	PRICE Exc GST	PRICE Inc GST
 TA-LIQ-DPB-C1	Clamp plate to suit fert. boot ST-DPB-F1 with PR96	14.65	16.12
TA-LIQ-DPB-C2	" " " " " ST-DPB-F2/F4 with PR86	14.65	16.12
TA-LIQ-TUBE-1	Stainless 6mm tube to suit PR 96, PR 86 Super Seeders	15.00	16.50
TA-LIQ-SBB-1	Tube / clamp assy for single boot brkt #1 using PR 96	29.40	32.34
TA-LIQ-SBB-2	" " " " " " #2 " PR 86	29.40	32.34
TA-LIQ-SBB-3	" " " " " " #3 " "	29.40	32.34
TA-LIQ-SBB-4	" " " " " " #4 " "	28.50	31.35

BOLTS

(Supplied complete with Nyloc nuts)

***Exclusive to
Primary Sales!
Heavy Duty
7/16" Nyloc Nuts
supplied with
all 7/16" bolts.
Also available
separately.**



BOLT SIZE	Exc GST	Inc GST	BOLT SIZE	Exc GST	Inc GST
3/4" x 5/16" Grade 5	.55	.61	2 1/2" x 5/8" Grade 8	4.20	4.62
1" x 5/16" Grade 5	.70	.77	2 3/4" x 7/16" Grade 8*	4.50	4.95
1 1/2" x 5/16" Grade 5	.85	.94	2 3/4" x 1/2" Grade 8	3.00	3.30
1 1/2" x 3/8" Grade 5	1.20	1.32	3" x 7/16" Grade 8*	4.95	5.45
1 3/4" x 7/16" Grade 5*	1.80	1.98	3" x 1/2" Grade 8	2.95	3.25
2" x 3/8" Grade 5	1.45	1.60	3 1/2" x 1/2" Grade 8	3.50	3.85
2" x 3/8" Grade 8	3.00	3.30	M10 x 30mm G8.8	1.15	1.27
2" x 7/16" Grade 5*	2.00	2.20	M10 x 40mm G8.8	1.35	1.49
2" x 7/16" Grade 8*	3.25	3.58	M10 x 50mm G8.8	2.00	2.20
2" x 1/2" Grade 8	2.30	2.53	M10 x 55mm G8.8	2.15	2.37
2 1/4" x 7/16" Grade 5*	2.15	2.37	M10 x 60mm G10.9	3.80	4.18
2 1/4" x 7/16" Grade 8*	3.60	3.96	M10 x 65mm G10.9	3.90	4.29
2 1/4" x 1/2" Grade 8	2.40	2.64	C/S Plow bolts for Slim wedges:		
2 1/2" x 7/16" Grade 5*	2.10	2.31	2 1/2" x 7/16" Bolt & Nyloc*	1.55	1.71
2 1/2" x 7/16" Grade 8*	3.70	4.07	2 1/2" x 1/2" Bolt & Nyloc	1.55	1.71
2 1/2" x 1/2" Grade 8	2.50	2.75	3" x 1/2" Bolt & Nyloc	1.95	2.14

NOTES

TERMS and CONDITIONS

Primary Sales Australia is a Manufacturer and Wholesaler of Agricultural machinery products and has a considerable distribution network, consisting of Agricultural Machinery Dealers and Rural merchandise retailers.

Sales of product to end-users are effected through this network.

Enquiries relating to product selection and features are handled by the Dealer network and supported by the three Primary Sales office locations in Perth, Western Australia, Dubbo, New South Wales and in Adelaide for South Australian clients.

These offices will direct any orders placed with them to the nominated or most appropriate Dealer.

Supply is made on an ex-works basis, with clients or their Dealers nominating the freight method and any freight insurance required.

Requirements, especially presswheels, coulters, seeding modules and Precision Seeder Bars are best secured by placing orders well in advance of the season.

Warranty Procedure

Warranty Claims must be communicated through the Dealer from whom the goods were originally purchased, who will discuss the claim with you and gather the required information.

Our Sales and Marketing Team, will put in place the documentation required to evaluate the claim, then at its discretion, replace or rectify the goods in question.

Many products are “consumable items,” used in highly abrasive or aggressive situations which vary effective service life and hence claims may be assessed subject to these factors and the extent of use.

If appropriate, our Sales and Marketing team will advise you on the most economical method of transporting the goods and what will be required for claim assessment. Freight costs in returning the goods for warranty to our warehouse is at your expense unless otherwise advised. Freight for replacement goods will be discussed with you prior to despatch and is dependent on the results of the warranty claim.

Returns for Credit

Correct evaluation of your needs, and reference to our current catalogue will help to minimise the need for returns. **Returns for Credit may only be made through your dealer once approval has been obtained from our Sales and Marketing Team. A written claim for credit from your dealer, nominating the original Tax Invoice number, must accompany the goods.** Prompt action in gaining the approval to return the goods will help minimise account and payment imbalances for your business, the dealer and ourselves.

Our Sales and Marketing team can advise on the most economical method of transporting the goods and details of restocking fees which may apply.

Freight will be at your expense unless otherwise negotiated.

Please mark the goods clearly and pack them adequately for shipment.

Cast-to-last tillage points
Precision seed & fertiliser placement systems
Presswheel systems Coulters
Precision Disc Seeding modules
Low-disturbance tine assemblies
Primary coil tines and Convert-a-Drill combine seeder conversions

Adapt-a-Gap header knife guards and extensions
Vibra-Mat "live" header platform kits
WCCO header belting

Primary Precision Seeder Bars (specialist dealers)
Glenvar Bale Direct system
The Hay Express bale feed-out system

Agricultural research and development
Welding, fabrication and engineering services



**Head Office
and Production
Perth**

44 Meliador Way,
Midvale W.A. 6056
Ph: (08) 9250 3500
Fax: (08) 9250 3600
Email:
sales@primarysales.com.au

**Eastern Area
Branch
Dubbo**

129 Fitzroy St,
Dubbo N.S.W. 2830
Ph: (02) 6882 2844
Fax: (02) 6882 6419
Email:
dubbo@primarysales.com.au

**South Australian
Branch**

c/- K.T.I. Trans. 112 Glenroy St.
Athol Park S.A. 5012
Ph: (08) 8345 4118
Fax: (08) 8345 5257
Email: sales.sa@bigpond.com

Visit our website
at www.primarysales.com.au

CLAREWOOD PTY. LTD ABN 79 245 186 094 as
TRUSTEE FOR PRIMARY SALES AUSTRALIA TRUST, TRADING AS PRIMARY SALES AUSTRALIA

YOUR  **PRIMARY**
SALES AUSTRALIA **DEALER**

